

# A-B-A-C-U-S

WEST HAMPSTEAD

## Teignmouth Road, Mapesbury Conservation Area London, NW2

A recently refurbished double bedroom conversion with a new long lease on a tree-lined street in the Mapesbury Conservation Area. Set within a stunning period house and surrounded by mature hedges with lovely views of the gardens. Teignmouth Road is a much sought after street with beautifully presented homes. The Jubilee Line stations of Willesden Green and Kilburn are both within walking distance, as are the vibrant bars and restaurants of the area.



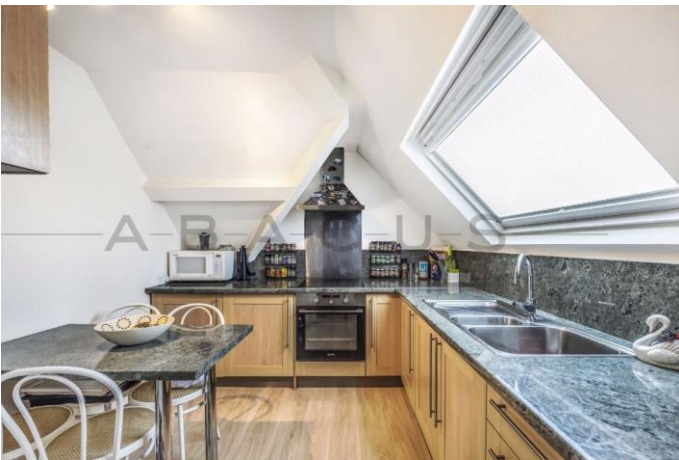
**£425,000 Long Lease**

303 WEST END LANE • WEST HAMPSTEAD • LONDON NW6 1RD

T: 020 7431 3777 • E: WESTHAMPSTEAD@ABACUSESTATES.COM • W: ABACUSESTATES.COM

ABACUS ESTATES IS A TRADING NAME FOR AND ON BEHALF OF ABACUS ESTATES (LONDON) LIMITED NO: 099182841 • VAT REGISTRATION NO: 223 0774 34 • REGISTERED OFFICE: 103 CHAMBERLAYNE ROAD, LONDON, NW10 3NS





Energy Efficiency Rating		Current	Potential
<i>Very energy efficient - lower running costs</i>			
(92-100)	A		
(81-91)	B		
(69-80)	C		
(55-68)	D	68	74
(39-54)	E		
(21-38)	F		
(1-20)	G		
<i>Not energy efficient - higher running costs</i>			
England, Scotland & Wales		EU Directive 2002/91/EC	

Environmental Impact (CO <sub>2</sub> ) Rating		Current	Potential
<i>Very environmentally friendly - lower CO<sub>2</sub> emissions</i>			
(92-100)	A		
(81-91)	B		
(69-80)	C		
(55-68)	D	68	74
(39-54)	E		
(21-38)	F		
(1-20)	G		
<i>Not environmentally friendly - higher CO<sub>2</sub> emissions</i>			
England, Scotland & Wales		EU Directive 2002/91/EC	





TOTAL APPROX FLOOR AREA 590 SQ.FT. (54SQ.M.)

Whilst every attempt has been made to ensure the accuracy of the floor plan contained here, measurements of doors, windows, rooms and any other items are approximate and no responsibility is taken for any error, omission, or mis-statement. This plan is for illustrative purposes only and should be used as such by any prospective purchaser. The services, systems and appliances shown have not been tested and no guarantee as to their operability or efficiency can be given  
Made with Metropix ©2019

#### VIEWING BY APPOINTMENT WITH AGENTS

Abacus Estates  
OPEN MON-FRI 8.00AM TO 7.00PM  
SAT - 9.30AM TO 4.00PM  
SUN - BY PRIOR APPOINTMENT

#### Important Notice

1. These particulars have been prepared in all good faith to give a fair overall view of the property. If any points are particularly relevant to your interest in the property please ask for further information/ verification.
2. The photograph depicts only certain parts of the property. The fittings illustrated may be included with the apartment/ house although the joinery and paint finishes may differ. No assumptions should be made with regards to parts of the property. Please ask for further information if required.
3. Any areas, measurements or distances referred to are given as a guide only and are not precise. If such details are fundamental to a purchase, purchasers must rely on their own enquires.
4. Descriptions of the property are subjective and are used in good faith as an opinion and a statement of fact. Please make further specific enquires to ensure that our descriptions are likely to match any expectations you may have of the property.

N.B. Abacus Estates is a Trading name for and on behalf of Lenscane Limited.