

A-B-A-C-U-S

WEST HAMPSTEAD

Portnall Road, London, W9

A superb Victorian period conversion with three bedrooms, private roof terrace and two bathrooms. This duplex property offers exceptional accommodation after an extensive refurbishment with attention to every detail. Internal floor area spans 1060 sq.ft and comprises an en-suite to the master bedroom, open plan reception with well-appointed kitchen and ample storage. Situated close to both Queens Park and Maida Vale offering an eclectic range of eateries and transport links.



£775,000 Leasehold

303 WEST END LANE • WEST HAMPSTEAD • LONDON NW6 1RD

T: 020 7431 3777 • E: WESTHAMPSTEAD@ABACUSESTATES.COM • W: ABACUSESTATES.COM

ABACUS ESTATES IS A TRADING NAME FOR AND ON BEHALF OF ABACUS ESTATES (LONDON) LIMITED NO: 099182841 • VAT REGISTRATION NO: 223 0774 34 • REGISTERED OFFICE: 103 CHAMBERLAYNE ROAD, LONDON, NW10 3NS



Energy Efficiency Rating		Current	Potential
Very energy efficient - lower running costs			
(92-100) A			
(81-91) B			
(69-80) C			
(55-68) D			
(39-54) E			
(21-38) F			
(1-20) G			
Not energy efficient - higher running costs			
		71	77
England, Scotland & Wales		EU Directive 2002/91/EC	

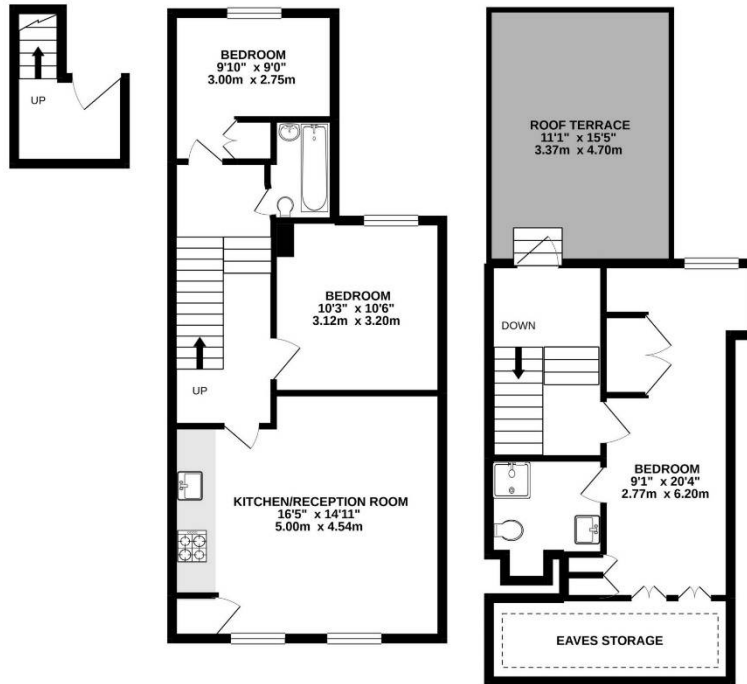
Environmental Impact (CO ₂) Rating		Current	Potential
Very environmentally friendly - lower CO ₂ emissions			
(92-100) A			
(81-91) B			
(69-80) C			
(55-68) D			
(39-54) E			
(21-38) F			
(1-20) G			
Not environmentally friendly - higher CO ₂ emissions			
England, Scotland & Wales		EU Directive 2002/91/EC	



FIRST FLOOR
47 sq ft. (4.4 sq m) approx.

1ST FLOOR
538 sq ft. (50.0 sq m) approx.

2ND FLOOR
310 sq ft. (28.4 sq m) approx.



TOTAL FLOOR AREA: 1060sq ft. (98.5 sq.m.) approx.

Whilst every attempt has been made to ensure the accuracy of the floorplan contained here, measurements of doors, windows, rooms and any other items are approximate and no responsibility is taken for any error, omission or mis-statement. This plan is for illustrative purposes only and should be used as such by any prospective purchaser. The services, systems and appliances shown have not been tested and no guarantee as to their operability or efficiency can be given.
Made with Metropix ©2021.

VIEWING BY APPOINTMENT WITH AGENTS

Abacus Estates

OPEN MON-FRI 8.00AM TO 7.00PM

SAT - 9.30AM TO 4.00PM

SUN - BY PRIOR APPOINTMENT

Important Notice

1. These particulars have been prepared in all good faith to give a fair overall view of the property. If any points are particularly relevant to your interest in the property please ask for further information/ verification.
2. The photograph depicts only certain parts of the property. The fittings illustrated may be included with the apartment/ house although the joinery and paint finishes may differ. No assumptions should be made with regards to parts of the property. Please ask for further information if required.
3. Any areas, measurements or distances referred to are given as a guide only and are not precise. If such details are fundamental to a purchase, purchasers must rely on their own enquires.
4. Descriptions of the property are subjective and are used in good faith as an opinion and a statement of fact. Please make further specific enquires to ensure that our descriptions are likely to match any expectations you may have of the property.