



Arington

Residential Sales & Lettings

£1,395 per month

Southdown Close, Haywards Heath, RH16



- Three Bedrooms
- En Suite To Master
- Downstairs WC
- Detached
- Garage
- Off Street Parking

TENANT INCENTIVE - AVAILABLE TO MOVE INTO NOW - Arington are delighted to offer to rent this neutrally decorated, three double bedroom detached house with off street parking, garage and South / West facing gardens. In addition to the three double bedrooms the property benefits from a 18' living room with French doors opening onto a South / West facing patio area, fitted kitchen, downstairs WC, en suite to the master bedroom, family bathroom and landing with space for a desk and chair. Externally there is off street parking leading to a garage with power and light, and South / West facing gardens mainly laid to lawn with a hedge border. GFCH. EPC: C. A viewing is highly recommended.

www.arington.co.uk

Southdown Close, Haywards Heath, RH16

Internal

Ground Floor

Door to...

Entrance Hall

Stairs to the first floor. Under stairs cupboard. Doors to...

Living / Dining Room

18'8" x 10'8" (5.69m x 3.25m)

French doors opening onto a South / West facing patio.

Kitchen

10'8" x 8'6" (3.25m x 2.59m)

Fitted with a range of Beech wall and floor units with granite effect worktop with inset one and a half sink with drainer and four point gas hob with extractor over and oven under. Tiled splash backs. Space and plumbing for a washing machine.

WC

Fitted with a white suite comprising of a low level WC and wall hung hand basin with tiled splash back.

First Floor

Landing

Stairs from the ground floor. Space for a desk and chair. Airing cupboard. Doors to...

Master Bedroom

12'0" x 9'9" (3.66m x 2.97m)

Door to...

En Suite

Fitted with a white suite comprising of a low level WC, pedestal basin with tiled splash back and mirror with light over and a tiled walk in double shower cubicle.

Bathroom

Fitted with a white suite comprising of a panelled bath with shower attachment, low level WC and pedestal basin with tiled splash back and mirror and light over.

Bedroom

10'11" x 9'5" (3.33m x 2.87m)

Bedroom

13'8" x 7'3" (4.17m x 2.21m)

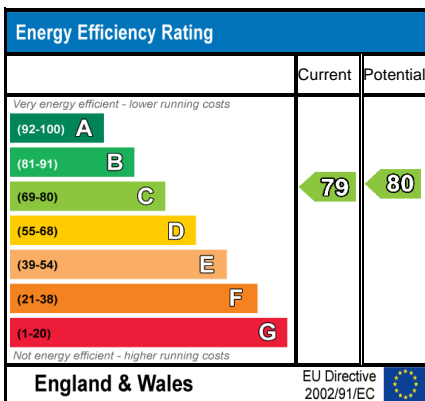
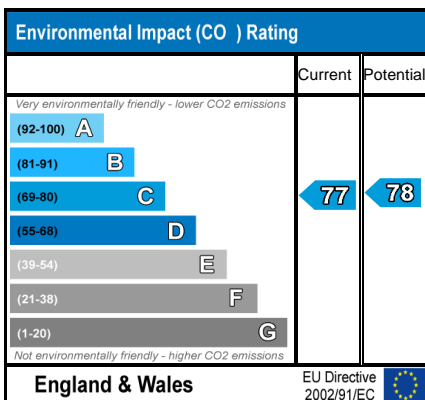
External

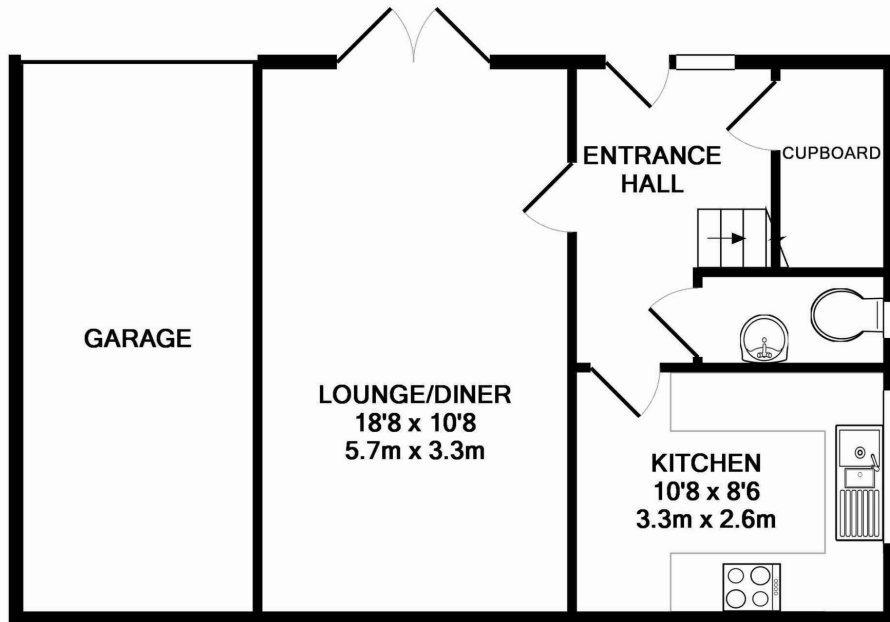
Garage

The garage has power and light with a remote controlled garage door.

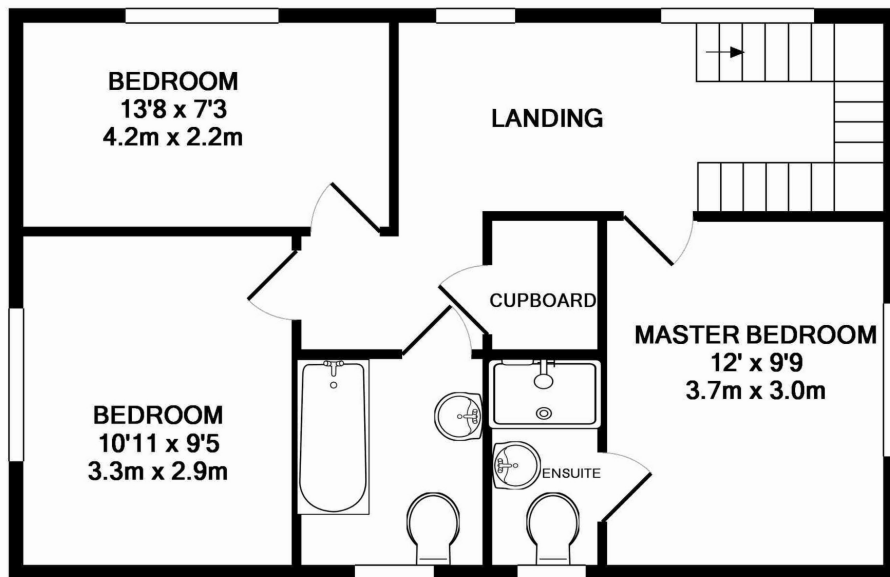
Garden

The garden wraps around the side and front of the house with a hedge border. There is a South / West facing patio area off the living room and the remaining garden is mainly laid to lawn.





GROUND FLOOR
APPROX. FLOOR
AREA 553 SQ.FT.
(51.4 SQ.M.)



1ST FLOOR
APPROX. FLOOR
AREA 553 SQ.FT.
(51.4 SQ.M.)

TOTAL APPROX. FLOOR AREA 1106 SQ.FT. (102.7 SQ.M.)

Whilst every attempt has been made to ensure the accuracy of the floor plan contained here, measurements of doors, windows, rooms and any other items are approximate and no responsibility is taken for any error, omission, or mis-statement. This plan is for illustrative purposes only and should be used as such by any prospective purchaser. The services, systems and appliances shown have not been tested and no guarantee as to their operability or efficiency can be given

Made with Metropix ©2015

VIEWING BY APPOINTMENT WITH AGENTS ARINGTON LTD

15 Station Road, Burgess Hill, West Sussex, RH15 9DE T: 01444 221 102 E: info@arington.co.uk W: www.arington.co.uk

General: While we endeavour to make our sales particulars fair, accurate and reliable, they are only a general guide to the property and, accordingly, if there is any point which is of particular importance to you, please contact the office and we will be pleased to check the position for you, especially if you are contemplating travelling some distance to view the property.

Measurements: These approximate room sizes are only intended as general guidance. You must verify the dimensions carefully before ordering carpets or any built-in furniture. Services: Please note we have not tested the services or any of the equipment or appliances in this property, accordingly we strongly advise prospective buyers to commission their own survey or service reports before finalizing their offer to purchase.

THESE PARTICULARS ARE ISSUED IN GOOD FAITH BUT DO NOT CONSTITUTE REPRESENTATIONS OF FACT OR FORM PART OF ANY OFFER OR CONTRACT. THE MATTERS REFERRED TO IN THESE PARTICULARS SHOULD BE INDEPENDENTLY VERIFIED BY PROSPECTIVE BUYERS OR TENANTS. NEITHER ARINGTON LTD NOR ANY OF ITS EMPLOYEES OR AGENTS HAS ANY AUTHORITY TO MAKE OR GIVE ANY REPRESENTATION OR WARRANTY WHATSOEVER IN RELATION TO THIS PROPERTY. YOUR HOME IS AT RISK IF YOU DO NOT KEEP UP REPAYMENTS ON A MORTGAGE OR OTHER LOAN SECURED ON IT.

Written quotations available on request. All loans secured on property. Life assurance is usually required.