

## Northumberland Park, Northumberland Heath, DA8

3/4 bedrooms, 2 reception rooms, terraced house located on a quiet road with good access to local shops, rail networks and schools. The property benefits from double glazing, gas central heating and front & rear gardens.



Branch	<b>Bexletts Residential Lettings &amp; Management</b>
Reference	<b>BEX_00018</b>
Type	<b>Terraced House</b>
Bedrooms	<b>3 / 4 (With 4<sup>th</sup> Bedroom of the 3<sup>rd</sup>)</b>
Location	<b>Northumberland Park, Northumberland Heath, DA8 1HG</b>
Asking Price	<b>£85 per night</b>
Status	<b>Available Now</b>

### Front Garden

#### Reception 1

*11'9" x 10'7" (3.58m x 3.23m)* Double glazed window to front, radiator, wood flooring.

#### Reception 2

*10'9" x 8'8" (3.28m x 2.64m)* Double glazed window to rear, radiator, wood flooring

#### Kitchen/Diner

*20'6" x 9'6" (6.25m x 2.90m)* Large kitchen with wood flooring, tiled walls, fitted wall and base units, tiled splash back.

#### Bathroom

*7'4" x 4'0" (2.24m x 1.22m)* White bathroom suite with bath tub and overhead shower, tiled walls and floor

#### Bedroom 1

*14'10" x 10'0" (4.52m x 3.05m)* good size double bedroom, double glazed to front, radiator, carpets laid

#### Bedroom 2

*10'0" x 9'0" (3.05m x 2.74m)* good size double bedroom, double glazed window to rear, radiator, carpets laid.

#### Bedroom 3

*11'0" x 9'5" (3.35m x 2.87m)* another good size bedroom, double glazed to the side, radiator, carpets laid

#### Bedroom 4

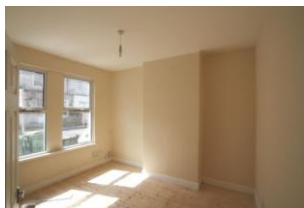
*9'6" x 6'1" (2.90m x 1.85m)* Double glazed window to rear, radiator, carpet laid. Room comes off bedroom 3.

### Rear Garden

*75'2" x 15'0" (22.91m x 4.57m)* Lawn with garage at the end

#### Garage

*21'2" x 9'9" (6.45m x 2.97m)* Clean empty garage with power supply and access from rear.



Office 7A, 137 Broadway, Bexleyheath, Kent, DA6 7EZ

020 8301 3445

[www.bexletts.co.uk](http://www.bexletts.co.uk)

Company no: 6719810

VAT no: 978372661