



£500,000

St Margarets Road, Hanwell, W7

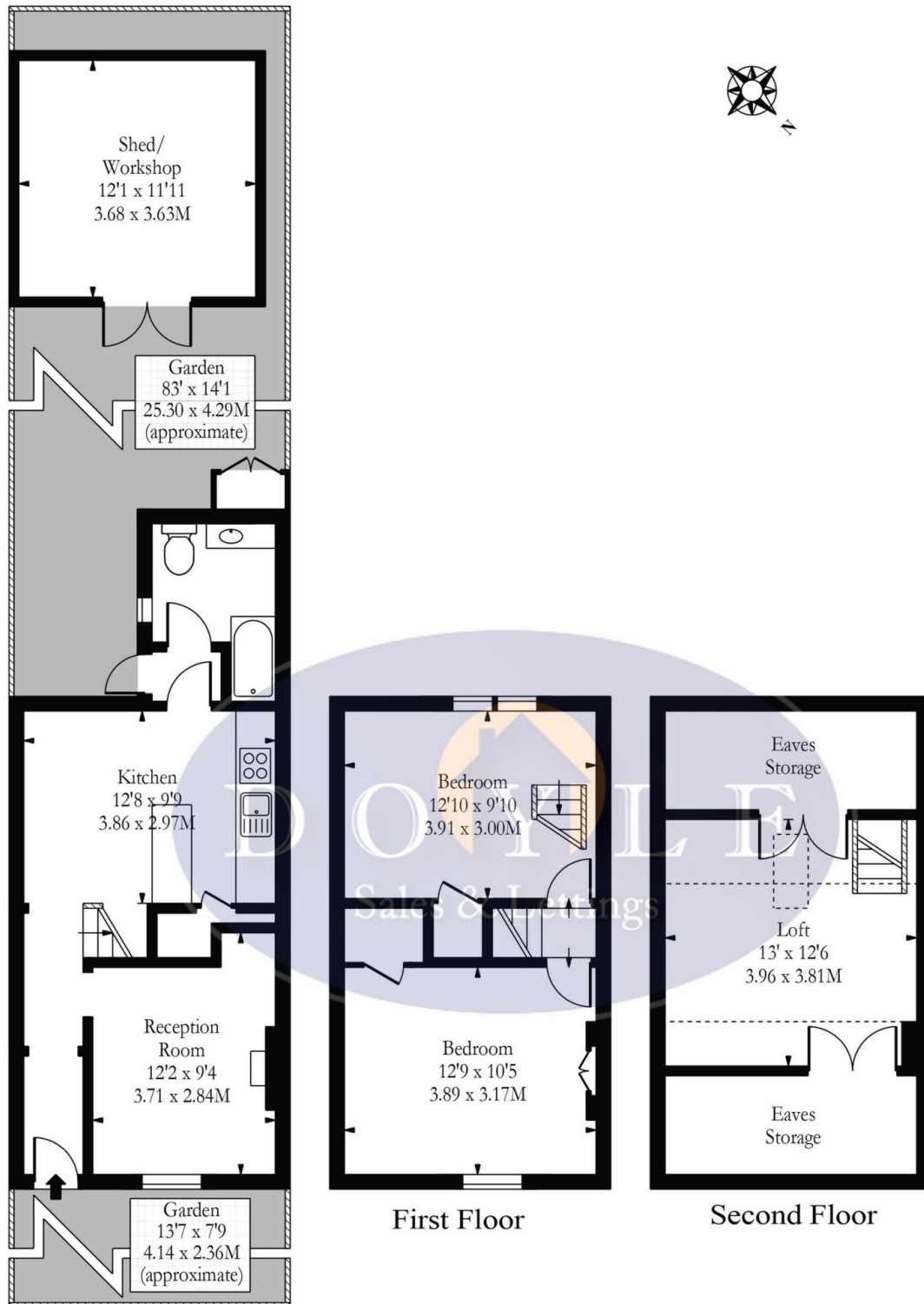


- 2 Double Bedrooms
- Great School Catchment
- 80 Ft South Facing Garden
- Close To Crossrail
- Loft Room
- Chain Free

Well presented 2 double bedroom family home full of character and charm. Accommodation comprises entrance hallway, front reception room, eat in kitchen/diner and family bathroom. On the first floor there are two double bedrooms and great sized loft room with eaves storage. The property benefits from a private rear garden, South facing, over 80 feet mature and well maintained with a useful workshop. St Margarets Road is situated close to the Grand Union Canal and the popular Fox Public House, in a great school catchment area, within easy access to Hanwell station (Crossrail), Boston Manor station (Piccadilly line), road networks, bus routes, parks and shops. This property is offered with no onward chain.



St. Margaret's Road, W7



Ground Floor

Approx Total Internal Area 959 Sq Ft - 89.09 Sq M

(Including Eaves Storages, Restricted Height Area, Loft & Excluding Shed/ Workshop)

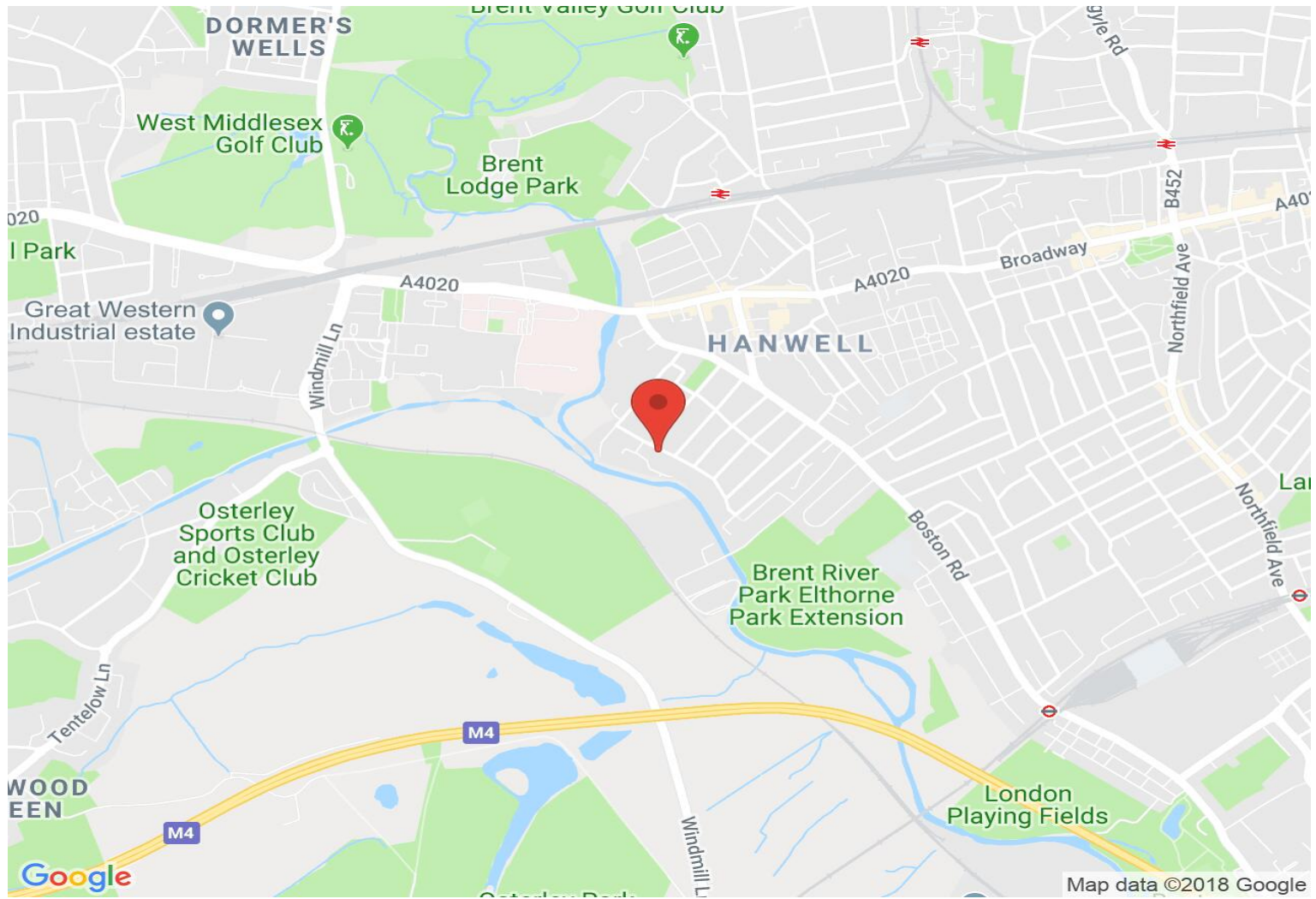
Approx Gross Internal Area 659 Sq Ft - 61.22 Sq M

(Excluding Eaves Storages, Restricted Height Area, Loft & Shed/ Workshop)

Illustration Purposes Only

Whilst every attempt has been made to ensure the accuracy of the floor plan contained here, measurements of doors, windows, rooms and any other items are approximate and no responsibility is taken for any errors, omissions or mis-statements. The plan is for illustrative purposes only, is not to scale and should be used as such by any prospective purchaser.

Map



VIEWING BY APPOINTMENT WITH AGENTS DOYLE SALES & LETTINGS

11 Broadway Buildings, Boston Rd, Hanwell, London, W7 3TT T: 020 8840 0171 E: info@doylesalesandlettings.co.uk W: www.doylesalesandlettings.co.uk

General: While we endeavour to make our sales particulars fair, accurate and reliable, they are only a general guide to the property and, accordingly, if there is any point which is of particular importance to you, please contact the office and we will be pleased to check the position for you, especially if you are contemplating travelling some distance to view the property.

Measurements: These approximate room sizes are only intended as general guidance. You must verify the dimensions carefully before ordering carpets or any built-in furniture.

Services: Please note we have not tested the services or any of the equipment or appliances in this property, accordingly we strongly advise prospective buyers to commission their own survey or service reports before finalizing their offer to purchase.

THESE PARTICULARS ARE ISSUED IN GOOD FAITH BUT DO NOT CONSTITUTE REPRESENTATIONS OF FACT OR FORM PART OF ANY OFFER OR CONTRACT. THE MATTERS REFERRED TO IN THESE PARTICULARS SHOULD BE INDEPENDENTLY VERIFIED BY PROSPECTIVE BUYERS OR TENANTS. NEITHER DOYLE SALES & LETTINGS NOR ANY OF ITS EMPLOYEES OR AGENTS HAS ANY AUTHORITY TO MAKE OR GIVE ANY REPRESENTATION OR WARRANTY WHATEVER IN RELATION TO THIS PROPERTY.

YOUR HOME IS AT RISK IF YOU DO NOT KEEP UP REPAYMENTS ON A MORTGAGE OR OTHER LOAN SECURED ON IT.

Written quotations available on request. All loans secured on property. Life assurance is usually required.

EPC Rating R

