



**£2,750,000**

**Chatsworth Road, Ealing, W5**



- 5 En Suite Double Bedrooms
- London Skyline Views
- 3,697 Sq Ft
- Off Street Parking
- Detached
- Chain Free

A one of a kind, 5 double bedroom (all en suite), detached family home located on the popular Haymills Estate with London skyline views. This 3,697 sq ft, stunning and stylish new build property, perfect for entertaining offers an abundance of natural light, large windows, high ceilings and ample parking for several cars. Accommodation comprises wide entrance hallway with utility area and guest WC, 644 sq ft front reception room leading to a spacious dining area, second reception area and modern kitchen with built in appliances and island. The first floor hosts 3 large double bedrooms each with en suites and one with its own balcony. The top floor boasts the master suite with bathroom, both with spectacular London skyline views and its own roof terrace and a further en suite double bedroom. The rear garden is landscaped, has a large decked area and side access. Benefits include chain free, underfloor heating in the entire ground floor, double sided fireplace, built in wardrobes in all bedrooms, ample parking, amazing views of London and 10 year builder guarantee. Chatsworth Road is an ideal location close to Hanger Lane (Central line) and Ealing Common (District and Piccadilly lines) stations, excellent schools, bus routes, road networks and parks.

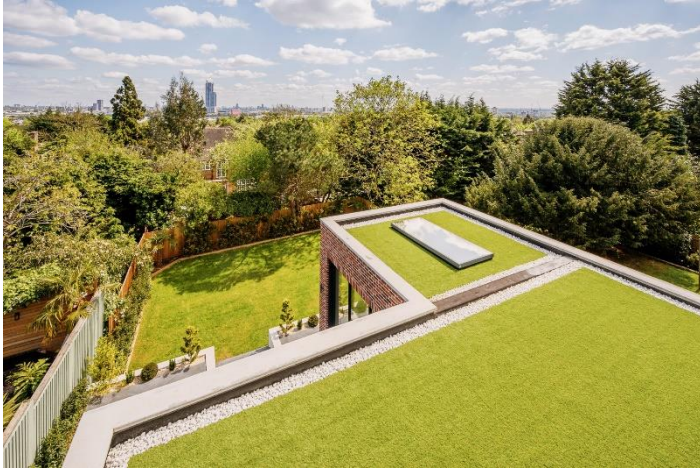








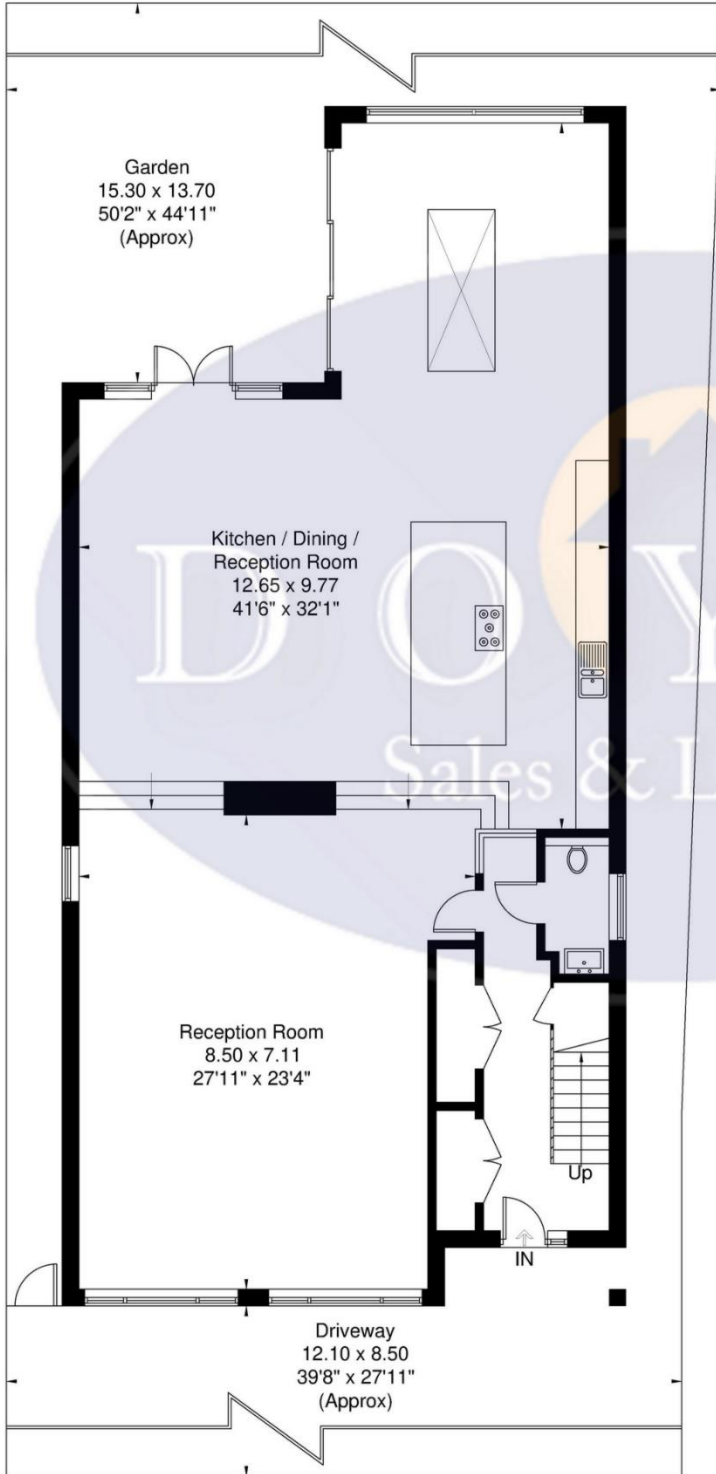
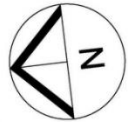




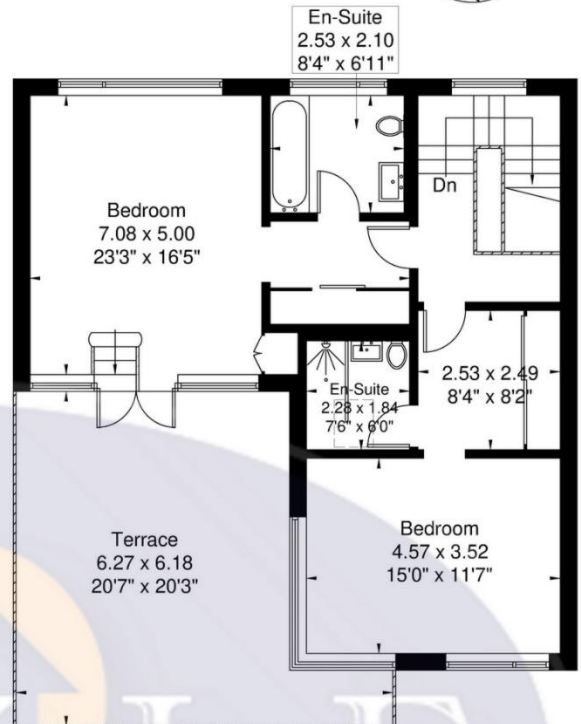


# Chatsworth Road W5 3DB

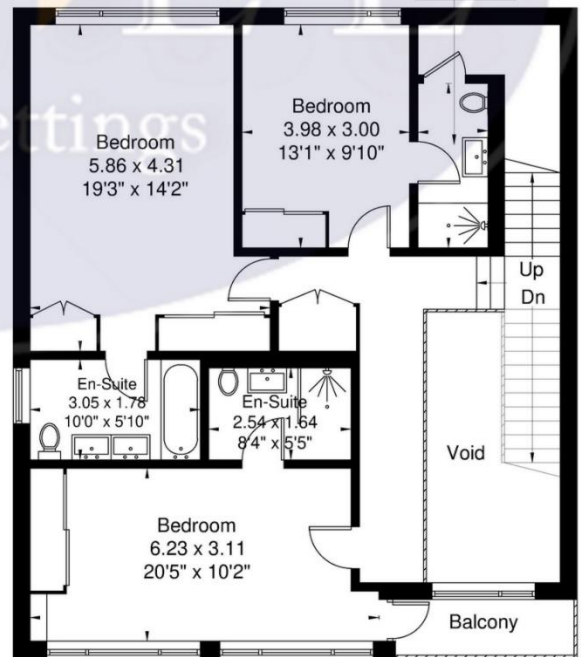
Approximate Gross Internal Area = 343.5 sq m / 3697 sq ft  
(Including Void)



**Ground Floor**  
171.8 sq m / 1849 sq ft



**Second Floor**  
70.2 sq m / 755 sq ft



**First Floor**  
101.5 sq m / 1092 sq ft

Although every attempt has been made to ensure accuracy, all measurements are approximate.  
The floorplan is for illustrative purposes only and not to scale.

## Map



### VIEWING BY APPOINTMENT WITH AGENTS DOYLE SALES & LETTINGS

11 Broadway Buildings, Boston Rd, Hanwell, London, W7 3TT T: 020 8840 0171 E: [info@doylesalesandlettings.co.uk](mailto:info@doylesalesandlettings.co.uk) W: [www.doylesalesandlettings.co.uk](http://www.doylesalesandlettings.co.uk)

General: While we endeavour to make our sales particulars fair, accurate and reliable, they are only a general guide to the property and, accordingly, if there is any point which is of particular importance to you, please contact the office and we will be pleased to check the position for you, especially if you are contemplating travelling some distance to view the property.

Measurements: These approximate room sizes are only intended as general guidance. You must verify the dimensions carefully before ordering carpets or any built-in furniture.

Services: Please note we have not tested the services or any of the equipment or appliances in this property, accordingly we strongly advise prospective buyers to commission their own survey or service reports before finalizing their offer to purchase.

THESE PARTICULARS ARE ISSUED IN GOOD FAITH BUT DO NOT CONSTITUTE REPRESENTATIONS OF FACT OR FORM PART OF ANY OFFER OR CONTRACT. THE MATTERS REFERRED TO IN THESE PARTICULARS SHOULD BE INDEPENDENTLY VERIFIED BY PROSPECTIVE BUYERS OR TENANTS. NEITHER DOYLE SALES & LETTINGS NOR ANY OF ITS EMPLOYEES OR AGENTS HAS ANY AUTHORITY TO MAKE OR GIVE ANY REPRESENTATION OR WARRANTY WHATEVER IN RELATION TO THIS PROPERTY.

YOUR HOME IS AT RISK IF YOU DO NOT KEEP UP REPAYMENTS ON A MORTGAGE OR OTHER LOAN SECURED ON IT.

Written quotations available on request. All loans secured on property. Life assurance is usually required.

EPC Rating Approx B