



Cambridge Crescent, Teddington, TW11

A Three Bedroom Mid Terrace House with Garden Occupying A Sought After Location

ESTATE & AGENT

— Tailored, local and personal —

Cambridge Crescent, Teddington, TW11

£899,950

Overview

Located just 0.2 miles (approx.) from Teddington Town is this three bedroom, three reception room mid terrace house with 1436 Sq. Ft. of accommodation.

The property is offered to the market with vacant possession and requires a programme of refurbishment. It is an ideal investment for a buyer in search of a project or a home on which they can put their own stamp.

The accommodation briefly comprises; entrance porch, entrance hallway with stairs to the first floor, lounge with bay window, dining room with patio doors leading to the full width conservatory extension, kitchen with fitted wall and base units also leading to the conservatory and finally a ground floor shower room/w.c.

To the first floor there are two good sized double bedrooms, a third bedroom, bathroom/w.c. and a landing area with loft access. The loft could provide the potential to extend the property (STPP) to create a fourth bedroom.

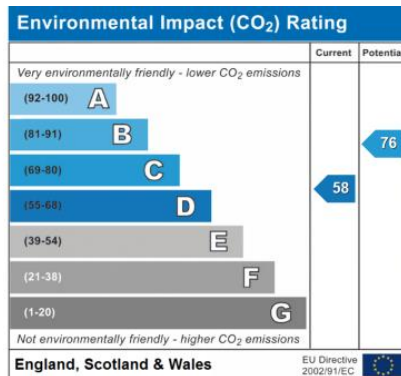
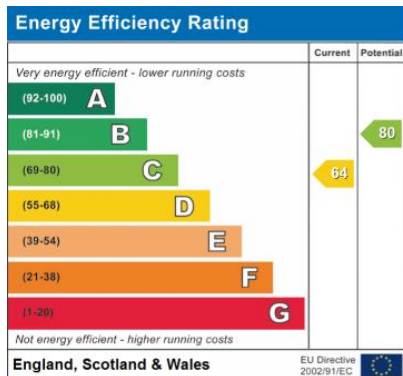
Externally, there is gated garden area to the front and a pleasant garden to the rear comprising of a wooden ramp leading from the conservatory, mature shrubs and trees, lawn, flower beds and garden shed. On street parking is available.

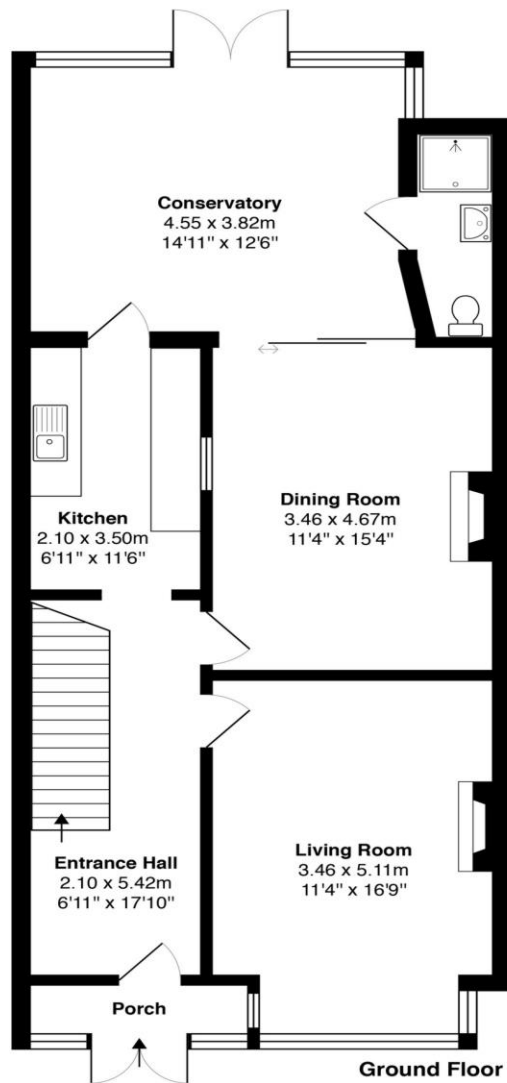
The property benefits from double glazing and gas fired central heating and the energy performance rating (EPC) is currently D.

Cambridge Crescent is ideally located in popular Teddington, close to a variety of good schools, local shops, amenities and restaurants. Royal Bushy Park is also nearby - an ideal green space for all to enjoy. Trains from Teddington Station (0.5 miles approx.) run to London Waterloo in 38 minutes and also provide connections to Twickenham, Richmond, Kingston, Wimbledon, Clapham Junction and Vauxhall. A 3D virtual tour is available upon request.



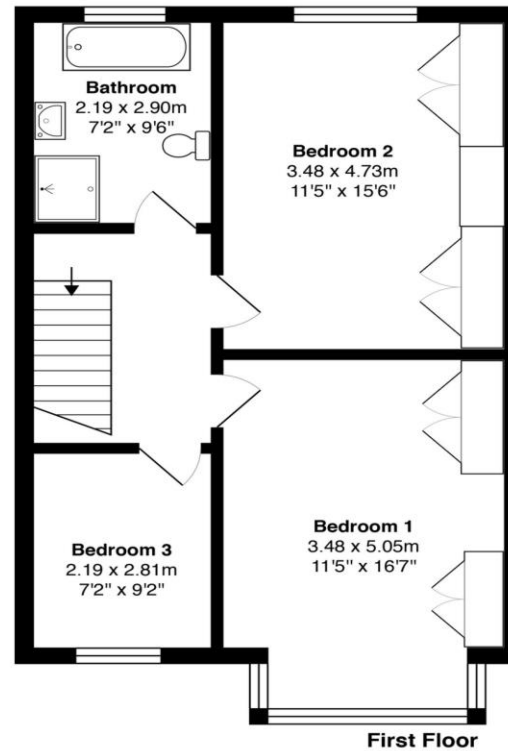
- Requiring refurbishment
- Potential to extend (STPP)
- Vacant possession
- Close to Teddington High Street
- Mature garden
- Three receptions including conservatory
- Bathroom and shower room
- Walking distance Teddington Station
- 1436 Sq Ft. / 133.4 Sq M.
- Virtual tour available





Cambridge Crescent, Teddington

Total Approximate Internal Area: 133.4 m² ... 1436 ft²



All measurements are approximate and for display purposes only

Viewing strictly by
appointment via
Estate and Agent

CONTACT

Estate and Agent
Hampton Wick
Kingston Upon Thames
KT1 4AY

david@estateandagent.com

Open Hours-
Monday to Friday 8am - 7pm
Saturdays 9am - 5pm
Sundays 10am - 4pm

0208 914 7884

www.estateandagent.com

Estate and Agent wish to advise prospective purchasers that we have not checked the services or appliances. The sales particulars have been prepared as guide only; any floor plan or map is for illustrative purposes only. Estates IT, for themselves and for the vendors or lessors of this property whose agents they are given that the particulars have been produced in good faith; do not constitute any part of a contract; no person in the employment of Pomp Properties has any authority to make or give any representation of warranty in relation to this property.

ESTATE & AGENT
— Tailored, local and personal —