



**Grange Park, Ealing, W5**

1 Bedrooms

**£1,450 per month**



LONDON ESTATES



LARGE DOUBLE BEDROOM | EXCELLENT TRANSPORT LINKS | SEPARATE KITCHEN | NEWLY FITTED CARPET | GREAT LOCATION

Available Date: 8<sup>th</sup> February 2025

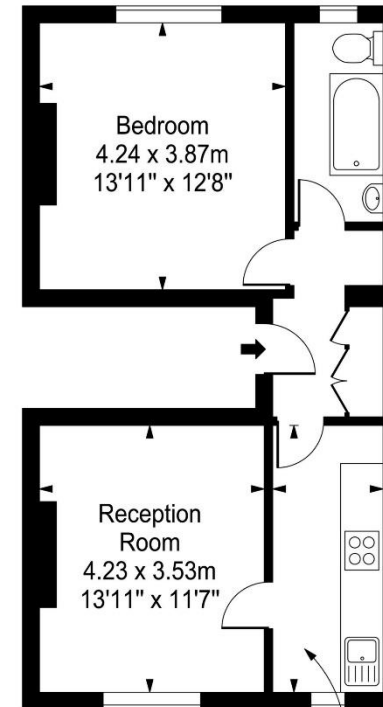
EPC Rating: C | Council Tax: D - £1,450 per month



LONDON ESTATES

## Grange Park

Approx. Gross Internal Area  
49 Sq M - 528 Sq Ft



First Floor  
Kitchen  
4.23 x 1.74m  
13'11" x 5'9"

Every attempt is made to assure accuracy, however measurements are approximate and for illustrative purposes only. Not to scale.  
Floor plan by [www.frameworkphotos.co.uk](http://www.frameworkphotos.co.uk)