



Latimer Road, North Kensington, W10

1 Bedrooms

£1,625 per month



LONDON ESTATES



SPACIOUS | NEWLY REFURBISHED | SEPARATE EAT-IN KITCHEN | LARGE RECEPTION ROOM | EXCELLENT TRANSPORT LINKS

Available Date: 16th March 2024

EPC Rating: D | Council Tax: D - £1,625 per month

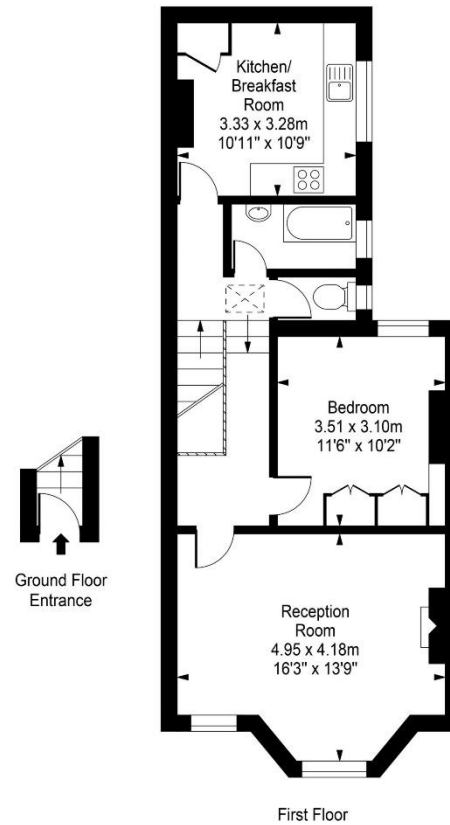


LONDON ESTATES



Latimer Road

Approx. Gross Internal Area
56 Sq M - 600 Sq Ft



Every attempt is made to assure accuracy, however measurements are approximate and for illustrative purposes only. Not to scale.
Floor plan by www.frameworkphotos.co.uk