



Flora Gardens, Hammersmith, W6

4 Bedrooms

£2,400 per month



LONDON ESTATES



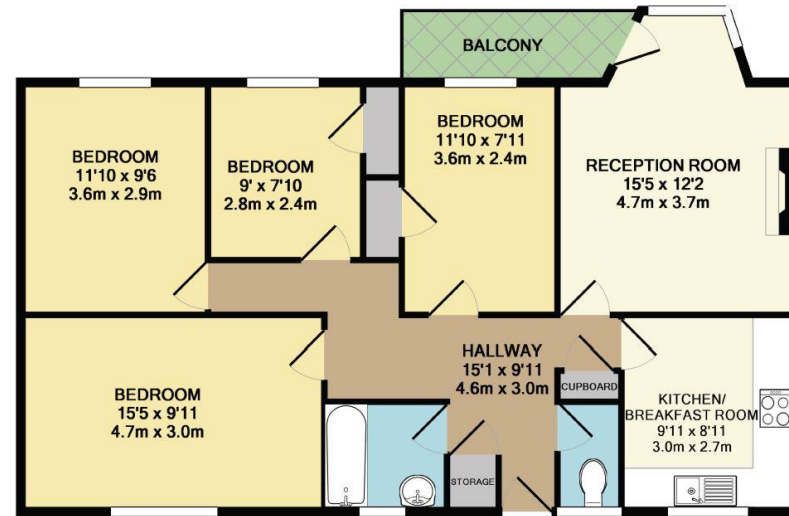
4 bedrooms | central heating | double glazing | excellent location

Available Date: 20th January 2022

EPC Rating: C | Council Tax: C - £2,400 per month



LONDON ESTATES



FLORA GARDEN HAMMERSMITH LONDON W6 0JD
TOTAL APPROX. FLOOR AREA 878 SQ.FT. (81.6 SQ.M.)

Whilst every attempt has been made to ensure the accuracy of the floor plan contained here, measurements of doors, windows, rooms and any other items are approximate and no responsibility is taken for any error, omission, or mis-statement. This plan is for illustrative purposes only and should be used as such by any prospective purchaser. The services, systems and appliances shown have not been tested and no guarantee as to their operability or efficiency can be given
Made with Metropix ©2014