



Glenthorne Road, Hammersmith, W6

3 Bedrooms

£2,100 per month



LONDON ESTATES



Professionally Managed | Open plan kitchen/reception | Split level | Great location | Close To Hammersmith Broadway

Available Date: 20th July 2021

EPC Rating: D | Council Tax: D - £2,100 per month



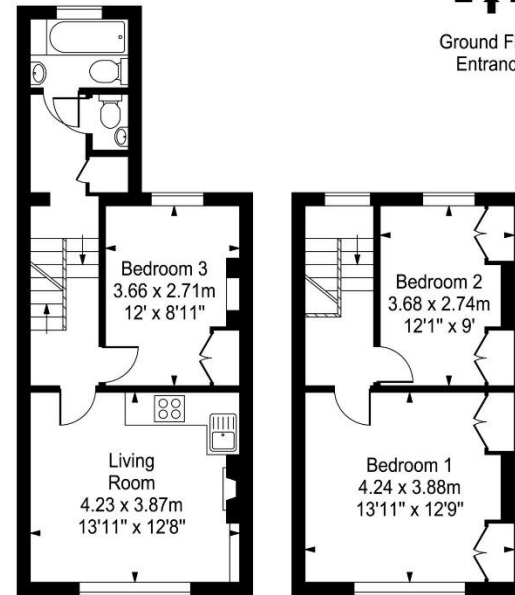
LONDON ESTATES

Glenthorne Road

Approx. Gross Internal Area
77.69 Sq M - 836 Sq Ft



Ground Floor
Entrance



First Floor

Second Floor

Every attempt is made to assure accuracy, however measurements are approximate and for illustrative purposes only. Not to scale.
Floor plan by www.frameworkphotos.co.uk