



Fulham Palace Road, Hammersmith, W6

3 Bedrooms

£1,950 per month



LONDON ESTATES



Professionally Managed | Separate living Room | Washer/dryer | Excellent transport links | Great local

Available Date: 20th August 2021

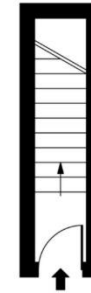
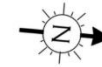
EPC Rating: D | Council Tax: D - £1,950 per month



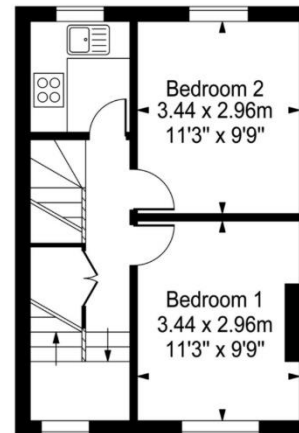
LONDON ESTATES

Fulham Palace Road

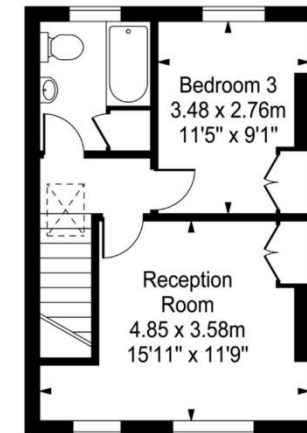
Approx. Gross Internal Area
74.19 Sq M - 798 Sq Ft



Ground Floor
Entrance



First Floor



Second Floor

Every attempt is made to assure accuracy, however measurements are approximate and for illustrative purposes only. Not to scale.
Floor plan by www.frameworkphotos.co.uk