



**Praed Street, Paddington, W2**

2 Bedrooms

**£2,000 per month**



LONDON ESTATES



Two Double Bedrooms | Separate Kitchen | Wooden Flooring | Excellent transport links

Available Date: 20<sup>th</sup> March 2024

EPC Rating: D | Council Tax: D - £2,000 per month

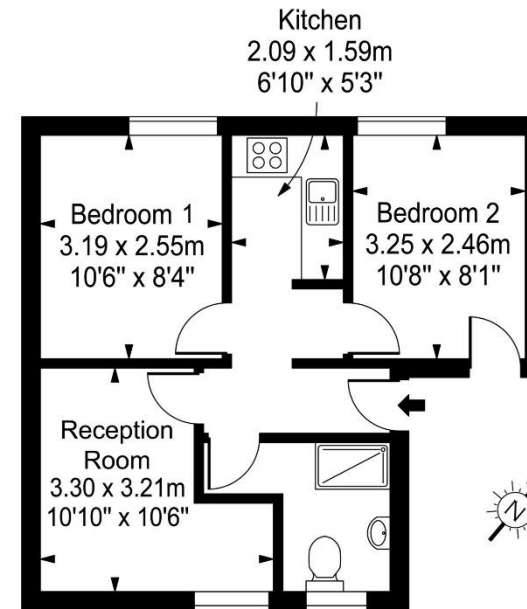


LONDON ESTATES

## Praed Street

Approx. Gross Internal Area

38.85 Sq M - 418 Sq Ft



First Floor

Every attempt is made to assure accuracy, however measurements are approximate and for illustrative purposes only. Not to scale.  
Floor plan by [www.frameworkphotos.co.uk](http://www.frameworkphotos.co.uk)