



Wingate Road, Hammersmith, W6

Cressy Court | 2 Bedrooms

£1,500 per month



LONDON ESTATES



£1,196 | TWO DOUBLE BEDROOMS | NEW KITCHEN | NEW BATHROOM | GOOD STORAGE | BIKE STORE

Available Date: 1st February 2024

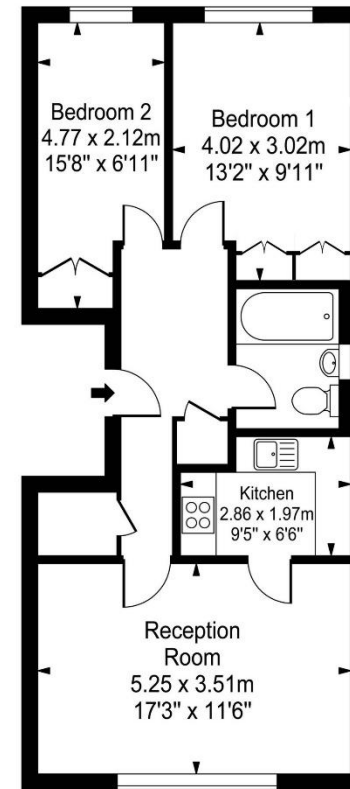
EPC Rating: E | Council Tax: D - £1,500 per month



LONDON ESTATES

Cressy Court

Approx. Gross Internal Area
60.50 Sq M - 651 Sq Ft



Second Floor

Every attempt is made to assure accuracy, however measurements are approximate and for illustrative purposes only. Not to scale.
Floor plan by www.frameworkphotos.co.uk