



Vale Lane, Acton, W3

4 Bedrooms

£2,600 per month



LONDON ESTATES



CT £2,774 | FOUR BEDROOMS (1 WITH BALCONY) | TWO BATHROOMS (1 EN-SUITE) | SEPARATE RECEPTION AND DINING

Available Date: 23<sup>rd</sup> August 2022

EPC Rating: E | Council Tax: G - £2,600 per month



LONDON ESTATES

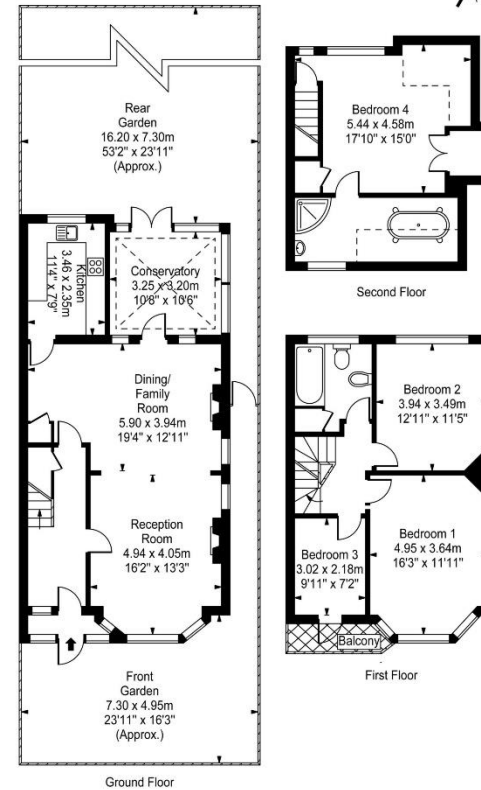
## Vale Lane

Approx. Gross Internal Area

161.50 Sq M - 1738 Sq Ft

Key :

- - - = Reduced headroom below 1.5m / 5'0"



Every attempt is made to assure accuracy, however measurements are approximate and for illustrative purposes only. Not to scale.  
Floor plan by [www.frameworkphotos.co.uk](http://www.frameworkphotos.co.uk)