



Rusthall Avenue, Chiswick, W4

4 Bedrooms

£3,553.33 per month



LONDON ESTATES



Semi detached | Great location | Close to amenities | Beautiful Garden | Kitchen with Utility room

Available Date: 24th May 2023

EPC Rating: E | Council Tax: G - £3,553.33 per month



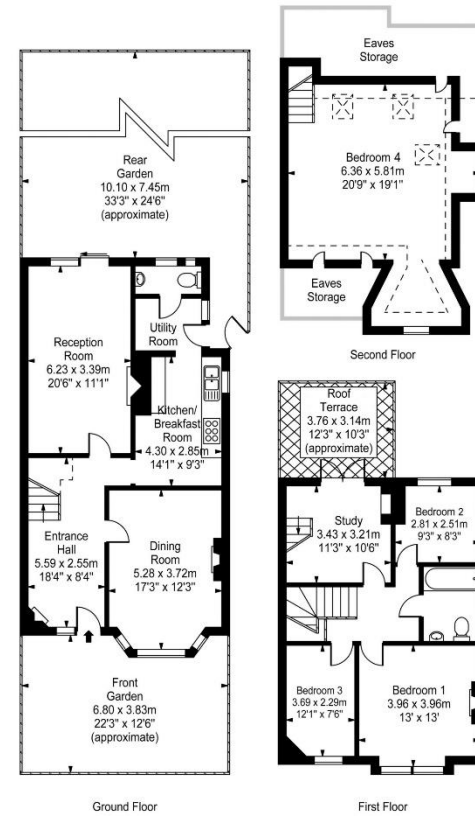
LONDON ESTATES

Rusthall Avenue

Approx. Gross Internal Area
173 Sq M - 1862 Sq Ft
(Excluding Eaves Storage)



Key :-
- - - Reduced headroom below 1.5m / 5'



Every attempt is made to assure accuracy, however measurements are approximate and for illustrative purposes only. Not to scale.
Floor plan by www.frameworkphotos.co.uk