



REGISTER NOW  
HOTLINE NUMBER  
0800 479 0750  
www.london-estates.com

## Turnham Green Terrace, Chiswick, W4

1 Bedroom Apartment

**£1,850 per month**



LONDON ESTATES



SECOND FLOOR | WATER BILL INCLUDED | SEPARATE KITCHEN | MODERN  
FIXTURES & FITTINGS | WOODEN FLOORING | BRIGHT AND SPACIOUS

Available Date: 28<sup>th</sup> August 2024

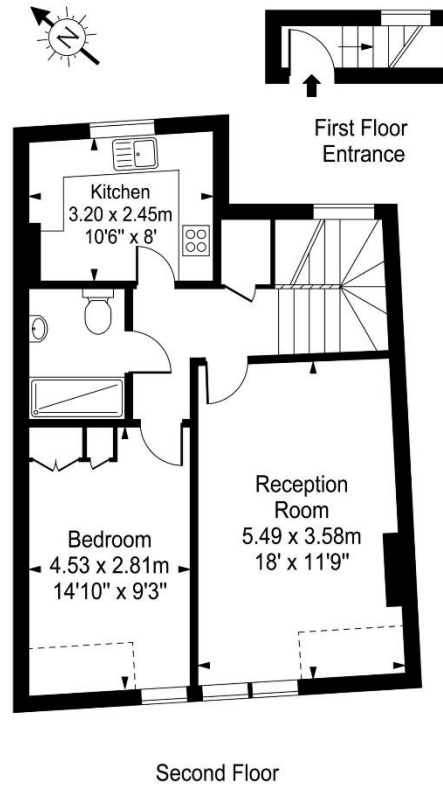
EPC Rating: E | Council Tax: £1,770 per year



LONDON ESTATES

## Turnham Green Terrace

Approx. Gross Internal Area  
57.35 Sq M - 617 Sq Ft



Every attempt is made to assure accuracy, however  
measurements are approximate and for illustrative purposes only. Not to scale.  
Floor plan by [www.frameworkphotos.co.uk](http://www.frameworkphotos.co.uk)