



Talgarth Road, Hammersmith, W6

Linacre Court | 2 Bedrooms

£2,100 per month



LONDON ESTATES



Two double bedrooms | Separate kitchen | Lots of natural light | Private balcony | Good transport links | 11th Floor

Available Date: 13th July 2025

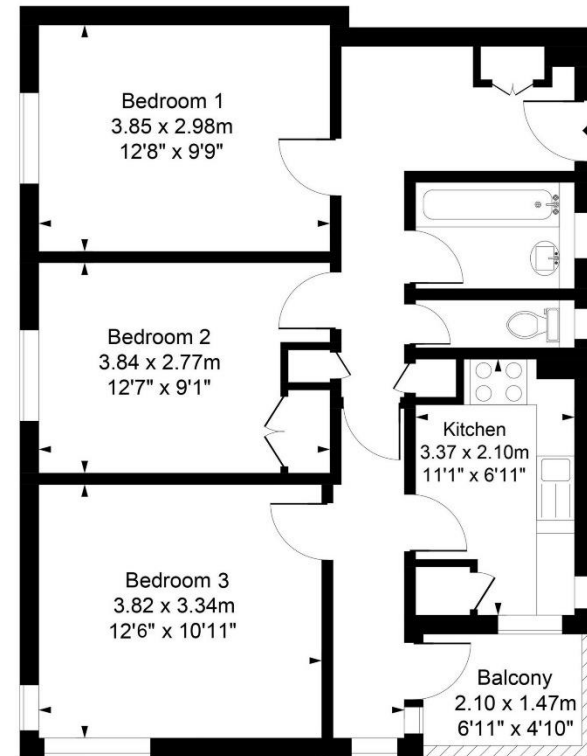
EPC Rating: C | Council Tax: C - £2,100 per month



LONDON ESTATES

Linacre Court

Approx. Gross Internal Area
60 Sq M - 645 Sq Ft



Eleventh Floor

Every attempt is made to assure accuracy, however measurements are approximate and for illustrative purposes only. Not to scale.
Floor plan by www.frameworkphotos.co.uk