



Stamford Brook Avenue, W6

Ranelagh Gardens | 3 Bedrooms

£750,000 Leasehold



LONDON ESTATES



BRIGHT AND SPACIOUS | ORIGINAL FEATURES | PERIOD BUILDING | AMAZING LOCATION | EXCELLENT TRANSPORT LINKS

Available Date: 28th September 2015

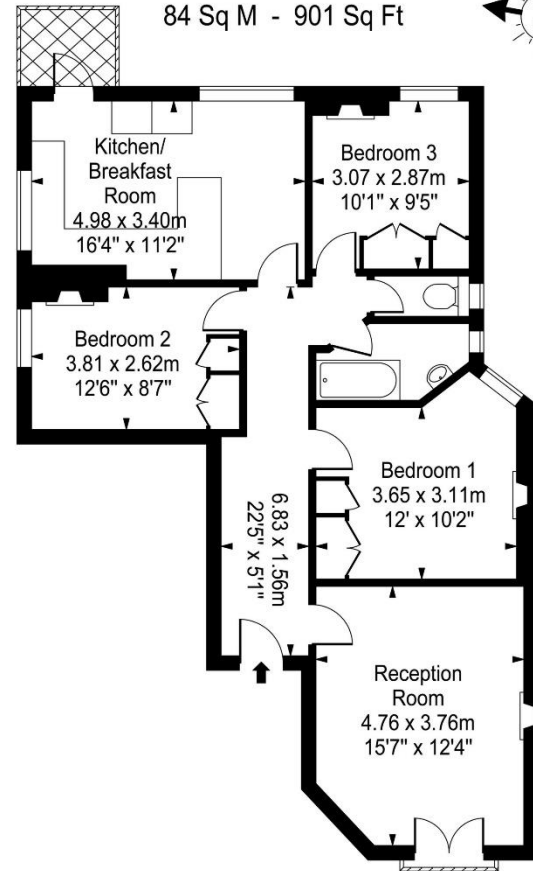
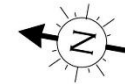
EPC Rating: D | Council Tax: F - £750,000 Leasehold



LONDON ESTATES

Ranelagh Gardens

Approx. Gross Internal Area
84 Sq M - 901 Sq Ft



Second Floor

Every attempt is made to assure accuracy, however measurements are approximate and for illustrative purposes only. Not to scale.
Floor plan by www.frameworkphotos.co.uk