



Westbourne Terrace, Paddington, W2

1 Bedrooms

£1,495 per month



LONDON ESTATES



Amazing location | Private Entrance | Court yard Garden | Newly refurbished | Under Floor heating

Available Date: 11th March 2022

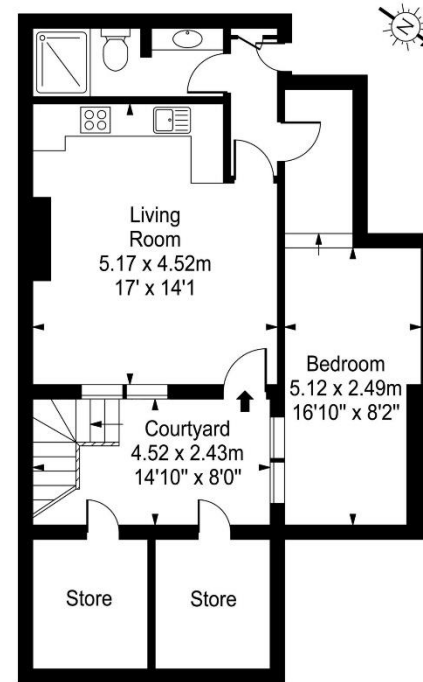
EPC Rating: D | Council Tax: D - £1,495 per month



LONDON ESTATES

Westbourne Terrace

Approx. Gross Internal Area
46.68 Sq M - 502 Sq Ft
(Excluding Store)



Lower Ground Floor

Every attempt is made to assure accuracy, however measurements are approximate and for illustrative purposes only. Not to scale.
Floor plan by www.frameworkphotos.co.uk