



**Madeley Road, Ealing, W5**

6 Bedrooms

**£8,200 per month**



LONDON ESTATES



CT £2,774 | SIX DOUBLE BEDROOMS | DINING ROOM | FORMAL LIVING ROOM | CINEMA ROOM | GYM AND SAUNA

Available Date: 24<sup>th</sup> September 2021

EPC Rating: E | Council Tax: G - £8,200 per month

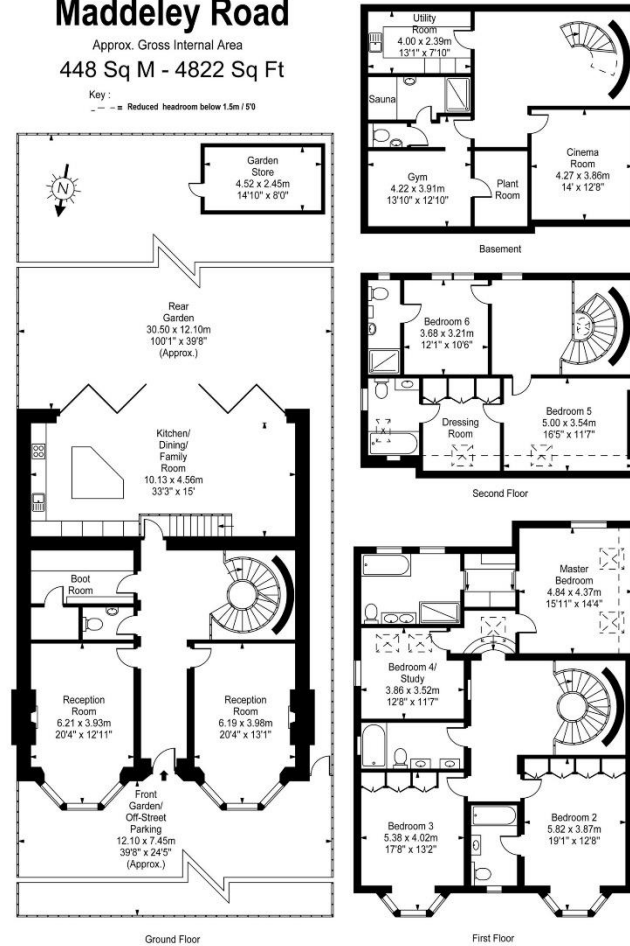


LONDON ESTATES

## Maddeley Road

Approx. Gross Internal Area  
448 Sq M - 4822 Sq Ft

Key:  
--- Reduced headroom below 1.5m / 5'0"



Every attempt is made to assure accuracy, however measurements are approximate and for illustrative purposes only. Not to scale.  
Floor plan by [www.frameworkphotos.co.uk](http://www.frameworkphotos.co.uk)