



Westcrot Square, Hammersmith, W6

1 Bedrooms

£1,525 per month



LONDON ESTATES



Raised ground floor | Modern kitchen | Built in wardrobes | Excellent location | Good transport links | Excellent local amenities.

Available Date: 1st August 2021

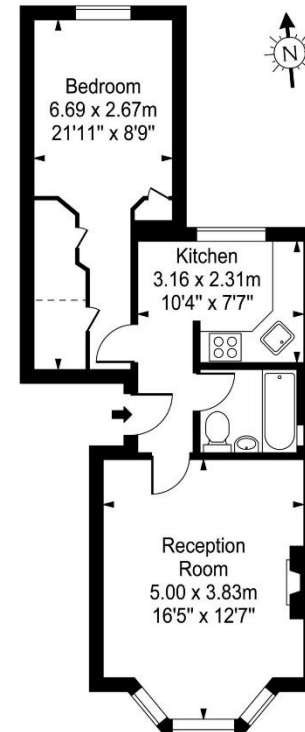
EPC Rating: D | Council Tax: D - £1,525 per month



LONDON ESTATES

Westcroft Square

Approx. Gross Internal Area
47.59 Sq M - 512 Sq Ft



Every attempt is made to assure accuracy, however measurements are approximate and for illustrative purposes only. Not to scale.
Floor plan by www.frameworkphotos.co.uk