



Palliser Road, West Kensington, W14

Palliser Court | 4 Bedrooms

£4,250 per month



LONDON ESTATES



CT £1,624 | FOUR DOUBLE BEDROOMS | THREE BATHROOMS | PARQUE FLOORING | PERFECT FOR RELATED SHARERS OR FAMILIES | CLOSE TO

Available Date: 12th June 2024

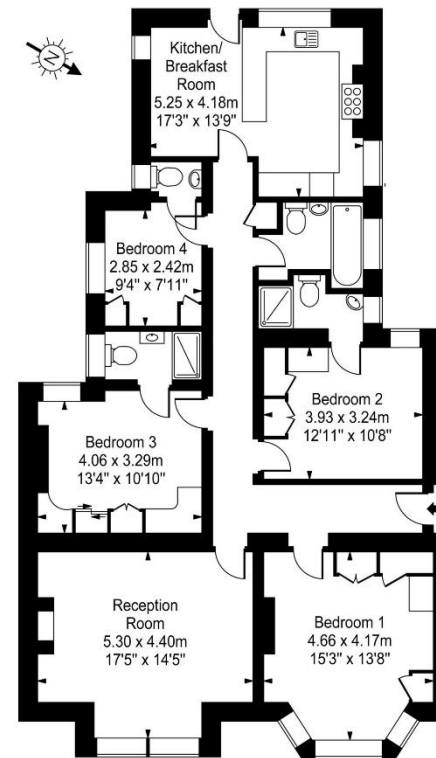
EPC Rating: D | Council Tax: F - £4,250 per month



LONDON ESTATES

Palliser Court

Approx. Gross Internal Area
128 Sq M - 1377 Sq Ft



Lower Ground Floor

Every attempt is made to assure accuracy, however measurements are approximate and for illustrative purposes only. Not to scale.

Floor plan by www.frameworkphotos.co.uk