



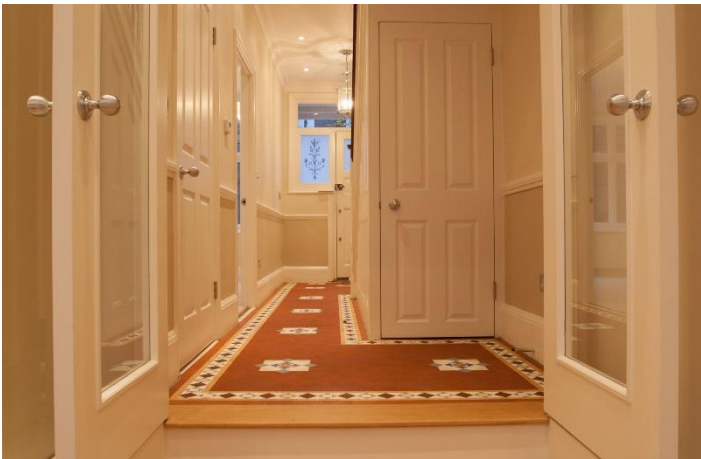
Crabtree Lane, Fulham, SW6

4 Bedrooms

£3,600 per month



LONDON ESTATES



Four bedrooms | Two bathrooms | Two receptions | Modern eat in kitchen | Large wooden decked garden | Close to river

Available Date: 1st September 2021

EPC Rating: C | Council Tax: F - £3,600 per month



LONDON ESTATES

CRABTREE LANE, SW6

Approx. gross internal area 1314 Sq Ft / 122.2 Sq M.

Approx. gross internal area 1490 Sq Ft / 136.6 Sq M. Inc. Cellar

Approx. gross internal area 1597 Sq Ft / 148.5 Sq M. Inc. Eaves Storage

