



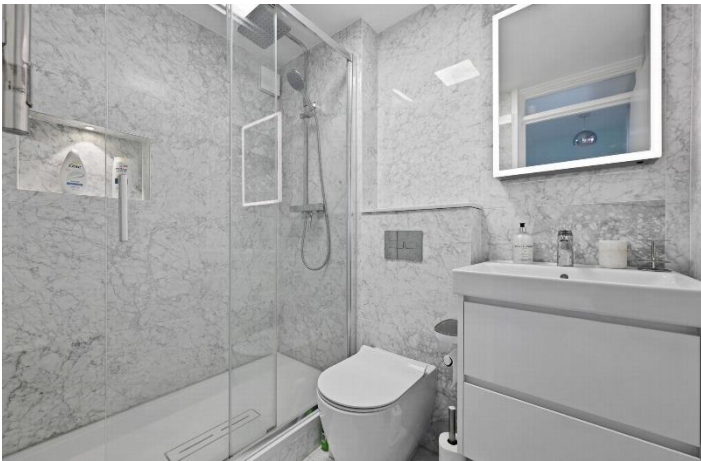
Crabtree Lane, Fulham, SW6

Adam Walk | 3 Bedrooms

£4,250 per month



LONDON ESTATES



NEWLY REFURBISHED | THREE DOUBLE BEDROOMS | SPLIT OVER FOUR FLOORS | DISHWASHER | PRIVATE TERRACE | AMAZING RIVER VIEWS

Available Date: 5th April 2025

EPC Rating: D | Council Tax: E - £4,250 per month



LONDON ESTATES

Adam Walk,
Crabtree Lane, SW6
Approximate Gross Internal Area
109.39 sq m / 1,177 sq ft
(Including restricted height
under 1.5m [-----])

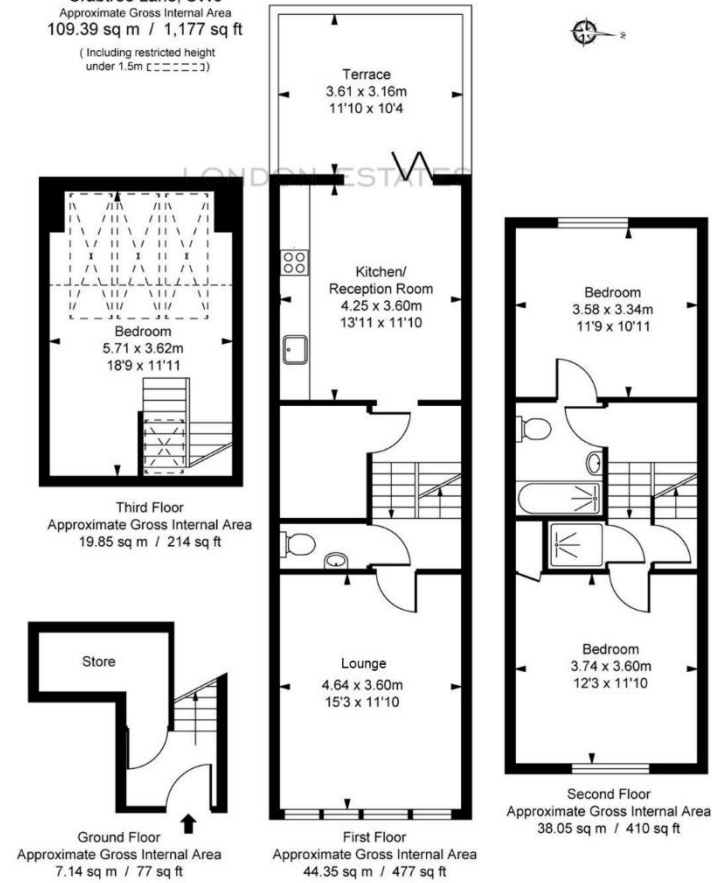


ILLUSTRATION FOR IDENTIFICATION PURPOSES ONLY
ALL MEASUREMENTS ARE MAXIMUM AND INCLUDE WINDOW BAYS AND WARDROBES WHERE APPLICABLE
THIS PLAN MUST NOT BE REPRODUCED BY ANY OTHER PERSON WITHOUT PERMISSION