



**Fulham Park Gardens, Fulham, SW6**

2 Bedrooms

**£1,698 per month**



LONDON ESTATES



Two Bedrooms | Two Bathrooms | Bright and spacious | Great location

Available Date: 15<sup>th</sup> June 2021

EPC Rating: D | Council Tax: E - £1,698 per month

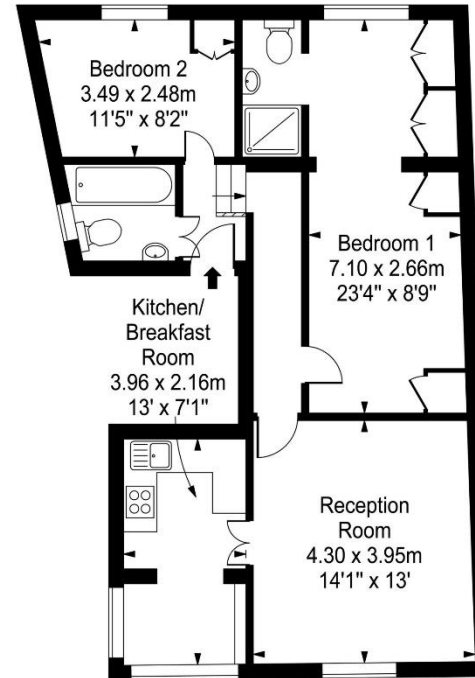


LONDON ESTATES

## Fulham Park Gardens

Approx. Gross Internal Area

68 Sq M - 731 Sq Ft



First Floor

Every attempt is made to assure accuracy, however measurements are approximate and for illustrative purposes only. Not to scale.  
Floor plan by [www.frameworkphotos.co.uk](http://www.frameworkphotos.co.uk)