



**Almeric Road, Battersea, SW11**

3 Bedrooms

**£3,500 per month**



LONDON ESTATES



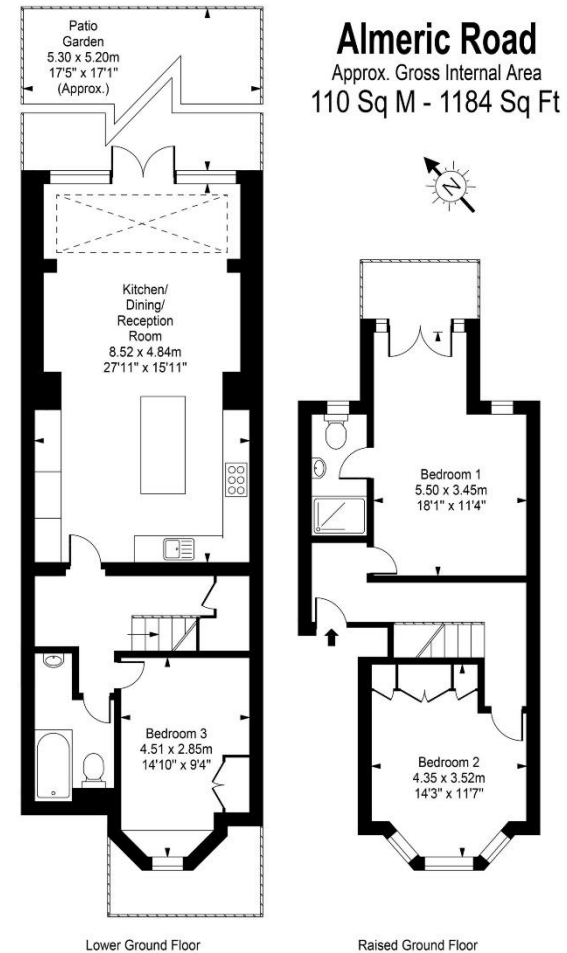
| THREE DOUBLE BEDROOMS | TWO BATHROOMS | OPEN PLAN LIVING SPACE | PRIVATE GARDEN | EXCELLENT LOCAL AMENITIES

Available Date: 21<sup>st</sup> September 2024

EPC Rating: C | Council Tax: F - £3,500 per month



LONDON ESTATES



Every attempt is made to assure accuracy, however measurements are approximate and for illustrative purposes only. Not to scale.  
 Floor plan by [www.frameworkphotos.co.uk](http://www.frameworkphotos.co.uk)