



Esmond Road, Chiswick, W4

4 Bedrooms

£5,250.00 per month



LONDON ESTATES



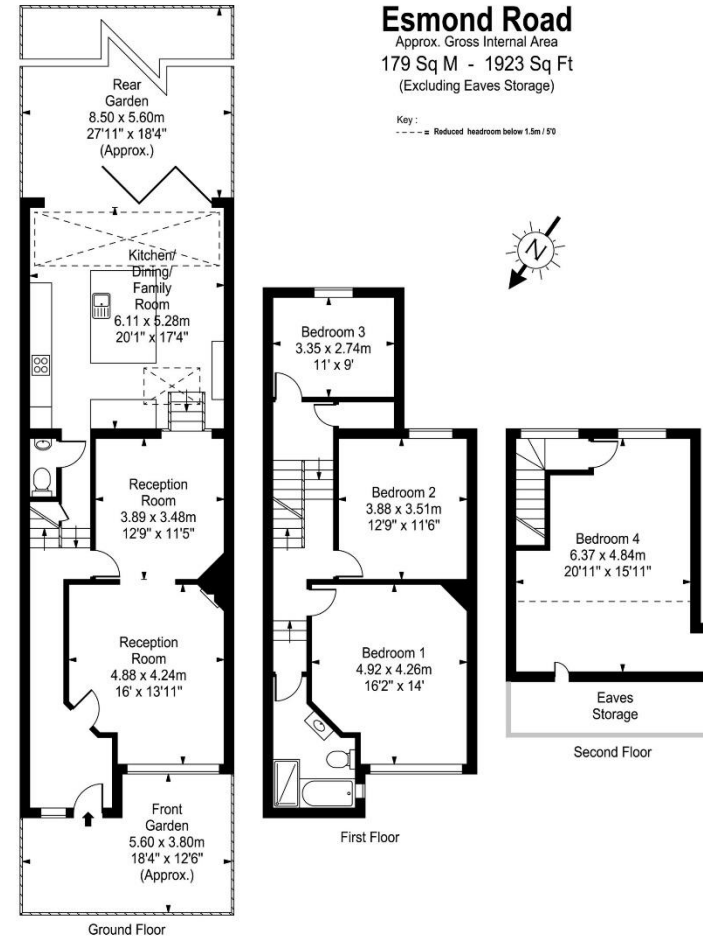
FOUR DOUBLE BEDROOMS | HIGH END FULLY FITTED KITCHEN | EXCELLENT LOCATION | PRIVATE GARDEN | LOTS OF NATURAL LIGHT | CLOSE TO ALL

Available Date: 26th July 2024

EPC Rating: C | Council Tax: G - £3,247 per year



LONDON ESTATES



Every attempt is made to assure accuracy, however measurements are approximate and for illustrative purposes only. Not to scale.
 Floor plan by www.frameworkphotos.co.uk