



Turnham Green Terrace, Chiswick, W4

0 Bedrooms

£1,175 per month



LONDON ESTATES



Spacious Studio Apartment | Separate kitchen | Double glazing | Excellent location | Good transport links

Available Date: 24th April 2022

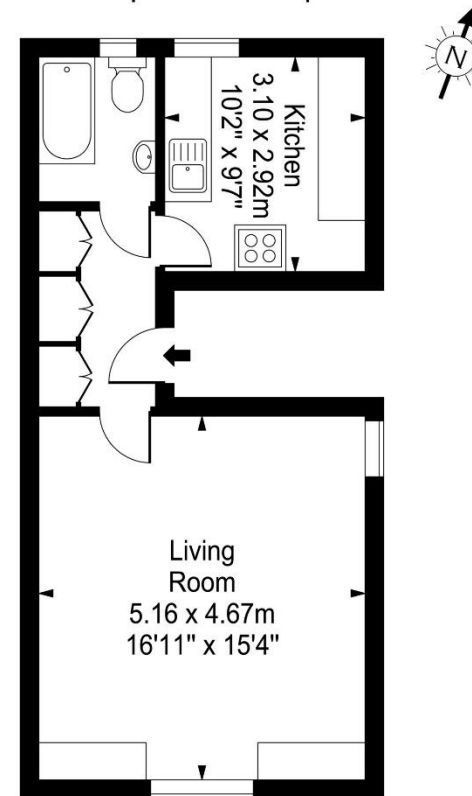
EPC Rating: E | Council Tax: D - £1,175 per month



LONDON ESTATES

Turnham Green Terrace

Approx. Gross Internal Area
42 Sq M - 452 Sq Ft



Second Floor

Every attempt is made to assure accuracy, however measurements are approximate and for illustrative purposes only. Not to scale.
Floor plan by www.frameworkphotos.co.uk