



Ravenscourt Gardens, Hammersmith, W6

2 Bedrooms

£1,895 per month



LONDON ESTATES



CT £1,461 | TWO DOUBLE BEDROOMS | MODERN KITCHEN | DISHWASHER | BRIGHT AND SPACIOUS | PRIVATE GARDEN

Available Date: 22nd June 2022

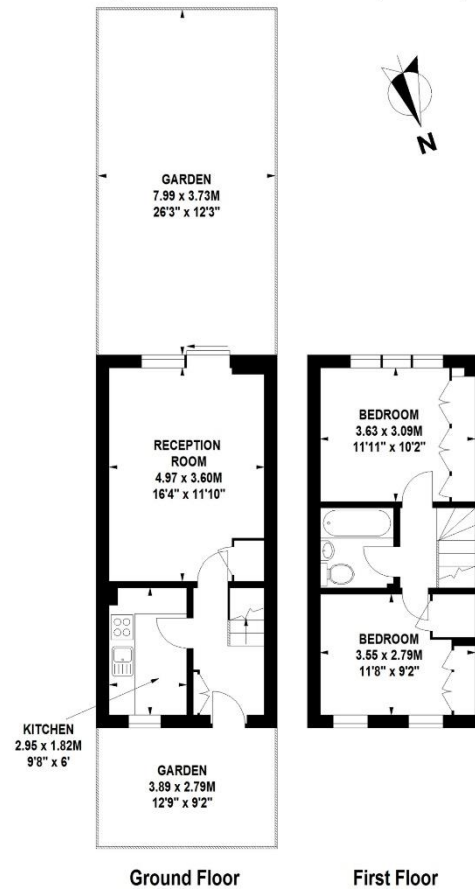
EPC Rating: D | Council Tax: E - £1,895 per month



LONDON ESTATES

Ravenscourt Gardens, W6

Approximate Gross Internal Area 58 sq m / 624 sq ft



Floor Plan produced for London Estates by Mays Floorplans ©. Tel 020 3397 4594
 Illustration for identification purposes only, not to scale
 All measurements are maximum, and include wardrobes and window bays where applicable