



Dalling Road, Hammersmith, W6

1 Bedrooms

£1,425 per month



LONDON ESTATES



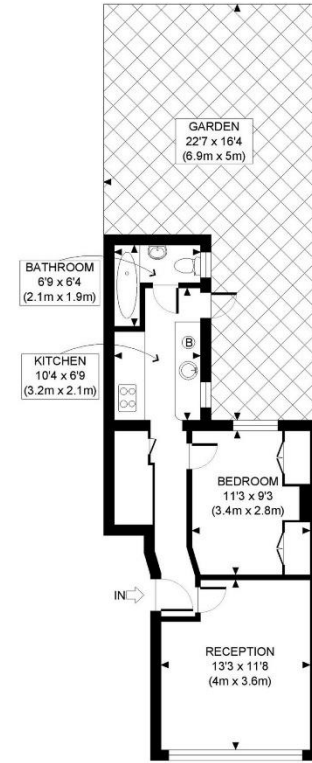
GREAT LOCATION | CLOSE TO TUBE | PRIVATE GARDEN | NEWLY DECORATED | BUILT IN STORAGE | EXCELLENT LOCAL AMENITIES

Available Date: No Date

EPC Rating: D | Council Tax: D - £1,425 per month



LONDON ESTATES



GROUND FLOOR
GROSS INTERNAL
FLOOR AREA 417 SQ FT

APPROX. GROSS INTERNAL FLOOR AREA: 417 SQ FT/ 39 SQM

PROPERTY PHOTO PLANS.co.uk
ONE STOP SHOP FOR PROPERTY MARKETING

Whilst every attempt has been made to ensure the accuracy of the floor plan contained here, measurements of the doors, windows, rooms and any other items are approximate and no responsibility is taken for any errors, omissions, or miss-statement. This plan is for illustrative purposes only and should be used as such by any prospective client. The services, systems and appliances shown have not been tested and no guarantee as to the operability or efficiency can be given.