



www.mapesburyproperty.co.uk



www.mapesburyproperty.co.uk



www.mapesburyproperty.co.uk



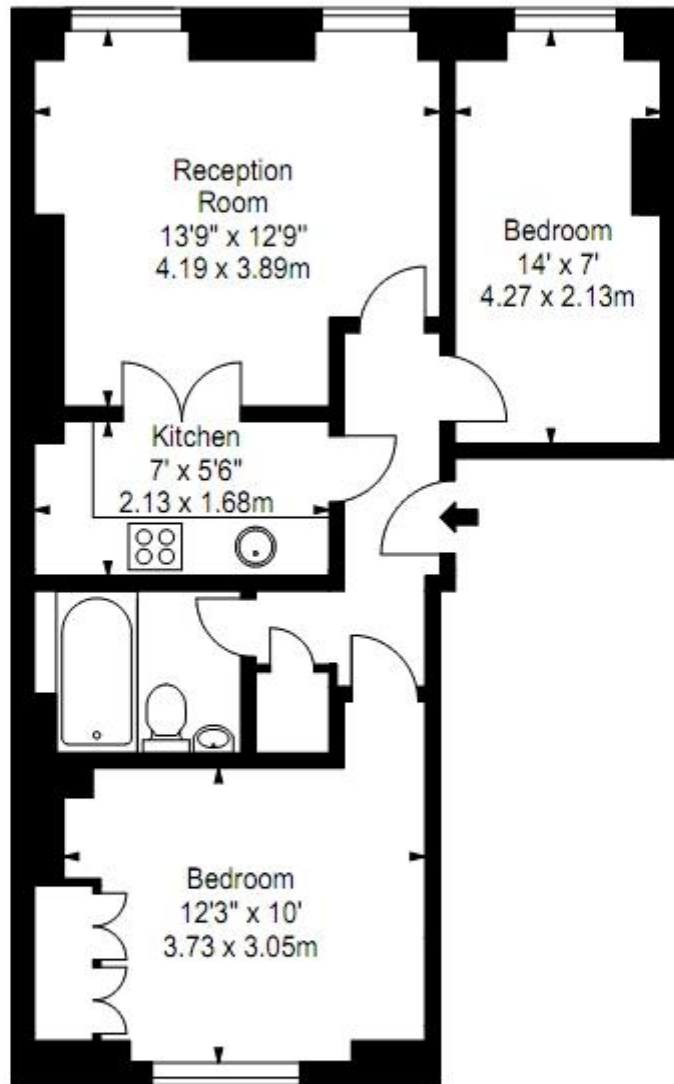
www.mapesburyproperty.co.uk

Nottingham Place, Marylebone, W1U

£620 per week

- Heart of Marylebone
- Broadband
- Digital TV
- Baker Street
- CCTV
- Wi-Fi
- Lift
- Regents Park

Positioned seconds to London's Hyde Park and Regents Park is a 2nd floor 2 bed flat positioned in the heart of Marylebone, in the highly prestigious Cedar House offering CCTV, Broadband/WIFI, Digital TV and Lift access. Baker Street and London Marylebone Stations are within 8 minutes walking distance. Size: 570 Sq. Ft.



FLAT 11
39-41 NOTTINGHAM PLACE
LONDON W1U 5LU

Second Floor

Approx Gross Internal Area*

564 Ft² - 52.40 M²

* As Defined by RICS - Code of Measuring Practice

Illustration For Identification Purposes Only. Not to Scale
All Calculations include Any/All Area Under 1.5m Head Height.

Bulkhead #10 (Overlift)



Sunnyhill House, 37 Sunnyhill Road
London, SW16 2UG

Tel: 0845 257 2020
Fax: 0845 257 2024
info@bkr.co.uk
www.bkr.co.uk
© BKR 2014