



www.mapesburyproperty.co.uk

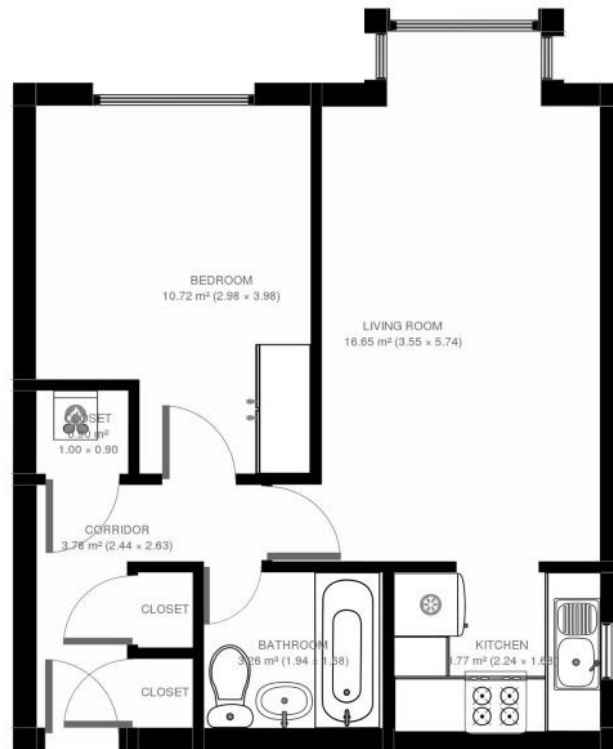


Debham Court, Cricklewood, NW2

£310,000 Leasehold

- 1 bedroom (2nd floor)
- Communal Gardens
- Parking
- CCTV
- Quiet Development
- Excellent Bus links

Must Be Seen! Large 1 bedroom 2nd floor flat in Cricklewood's sought after Debham Court. Pinemartin Close is located within easy reach of the amenities of Cricklewood Broadway and has excellent bus links into Central London. Development benefits from residents parking, CCTV, Entry-phone, natural lighting and views of the local greenery of Communal Gardens. Also positioned close to the open greenery of Gladstone Park. EPC: 77. Size: 457 Sq. Ft. Tenure: Leasehold



Approx Gross Internal Area Sq ft 457 Sq mt 42.5

Whilst every attempt had been made to ensure the accuracy of the floorplan shown, all the measurements, positioning fixtures, fittings and any other data shown are an approximate interpretation for illustrative purposes only and are not for scale. No responsibility is taken for any error, omission, miss-statement or use of data shown.

Floor plan by: www.whitephotos.co.uk