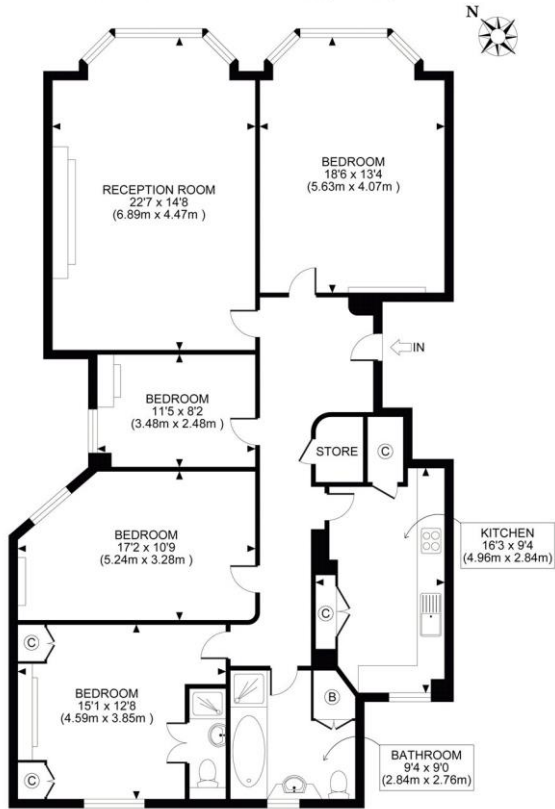


4 Bedroom Flat
West End Lane
London NW6

- Period Features
- Fitted Kitchen with all appliances
- Wooden Floors
- Four double bedrooms

Price: £1,037.31 pw / £4,495 pcm

SANDWELL MANSIONS WEST END LANE, NW6
 TOTAL APPROX. FLOOR PLAN AREA 1442 SQ.FT (134 SQ.M.)



Environmental Impact (CO ₂) Rating		
	Current	Potential
Very environmentally friendly - lower CO ₂ emissions		
(92-100) A		
(81-91) B		
(69-80) C		70
(55-68) D		
(39-54) E	51	
(21-38) F		
(1-20) G		
Not environmentally friendly - higher CO ₂ emissions		
England, Scotland & Wales		EU Directive 2002/91/EC

Energy Efficiency Rating		
	Current	Potential
Very energy efficient - lower running costs		
(92-100) A		
(81-91) B		
(69-80) C		73
(55-68) D		
(39-54) E	59	
(21-38) F		
(1-20) G		
Not energy efficient - higher running costs		
England, Scotland & Wales		EU Directive 2002/91/EC

Situated on the ground floor of this imposing mansion block is this FOUR DOUBLE BEDROOM apartment (approx. 1,400 sq ft.) with fantastic living space including a spacious lounge with high ceilings, wood floors and original period features, fully fitted kitchen/diner with all appliances, two bathrooms (one ensuite), and a grand entrance hall. Sandwell Mansions is located in the heart of West Hampstead and close to all the local shops, cafes, bars and restaurants as well as West Hampstead Jubilee line, Thameslink & Overground. Part furnished. AVAILABLE 21st JUNE.

ML Estates wish to advise prospective purchasers that we have not checked the services or appliances. These particulars have been prepared as a guide only, any floor-plan or map is for illustrative purposes only. ML Estates, for themselves and for the vendors or lessors of this property whose agents they are given notice that: the particulars have been produced in good faith; do not constitute any part of a contract; no person in the employment of ML Estates has any authority to make or give any representation of warranty in relation to this property.