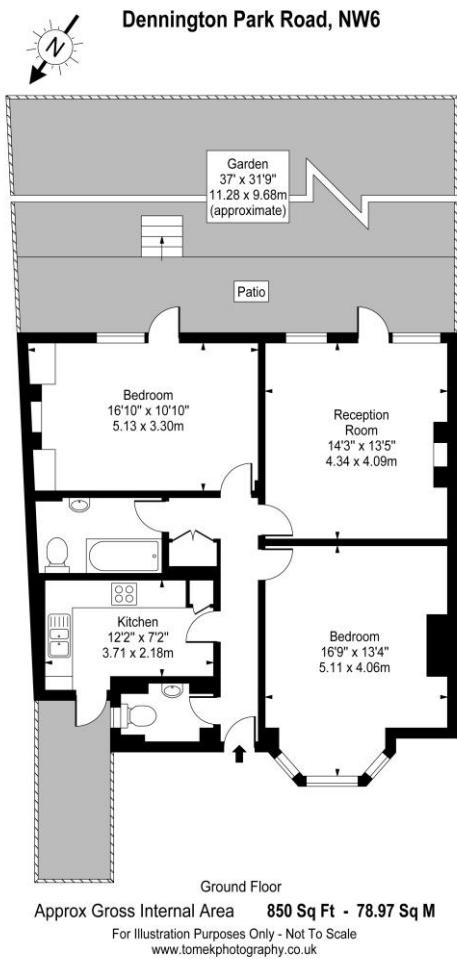




2 Bedroom Flat  
Dennington Park  
Road  
London NW6

- WOOD FLOORS
- PRIVATE REAR GARDEN
- TWO DOUBLE BEDROOMS
- SPACIOUS RECEPTION ROOM

Price: £425 pw / £1,841.67 pcm



Environmental Impact (CO <sub>2</sub> ) Rating		
	Current	Potential
<i>Very environmentally friendly - lower CO<sub>2</sub> emissions</i>		
(92-100) <b>A</b>		
(81-91) <b>B</b>		<b>80</b>
(69-80) <b>C</b>		
(55-68) <b>D</b>	<b>67</b>	
(39-54) <b>E</b>		
(21-38) <b>F</b>		
(1-20) <b>G</b>		
<i>Not environmentally friendly - higher CO<sub>2</sub> emissions</i>		
England, Scotland & Wales		EU Directive 2002/91/EC
Energy Efficiency Rating		
	Current	Potential
<i>Very energy efficient - lower running costs</i>		
(92-100) <b>A</b>		
(81-91) <b>B</b>		<b>80</b>
(69-80) <b>C</b>	<b>70</b>	
(55-68) <b>D</b>		
(39-54) <b>E</b>		
(21-38) <b>F</b>		
(1-20) <b>G</b>		
<i>Not energy efficient - higher running costs</i>		
England, Scotland & Wales		EU Directive 2002/91/EC

Private south facing rear garden. Superb two double bedroom lower ground floor apartment located on Dennington Park Road (850 sq ft.) and moments from West End Lane in West Hampstead. Comprising a spacious lounge with french doors to the lawned garden, separate kitchen/diner with all appliances, master bedroom with doors to rear garden, wood floors, family bathroom, own entrance. Part furnished. The apartment is located in the heart of West Hampstead near the popular Saturday Farmer's Market. Restaurants, bars, shopping facilities, the Jubilee line and London Overground stations can be found close by. AVAILABLE 1ST JUNE.

ML Estates wish to advise prospective purchasers that we have not checked the services or appliances. These particulars have been prepared as a guide only, any floor-plan or map is for illustrative purposes only. ML Estates, for themselves and for the vendors or lessors of this property whose agents they are given notice that: the particulars have been produced in good faith; do not constitute any part of a contract; no person in the employment of ML Estates has any authority to make or give any representation of warranty in relation to this property.