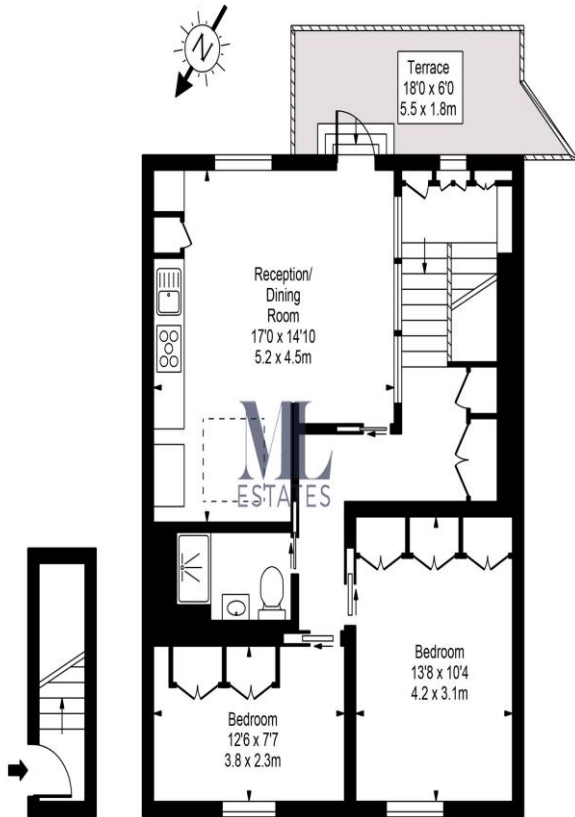


2 Bedroom Flat
Penywern Road
London SW5

- Superb Flat
- Interior Designed
- Great Location
- Roof Terrace

Price: £575 pw / £2,491.67 pcm

Penywern Road, SW5



Second Floor

Third Floor

Approx Gross Internal Area **752 Sq Ft - 69.86 Sq M**

For Illustration Purposes Only - Not To Scale
www.tomekphotography.co.uk



An interior designed home offering an abundance of storage, colourful and well thought out use of the available space. Comprising master bedroom with built-in wardrobes, second bedroom / office, fitted kitchen open plan to the reception room with dining table and chairs, five ring gas hob, waste disposal, fresh water dispenser, dishwasher, designer chairs and sofa, 55" LED TV, door to roof terrace with views reaching out over the London skyline, contemporary shower room with low level lighting, Bosch washing machine and dryer. Perfect for a professional couple or sole occupant. Located moments from Earls Court tube. Avail 11th March

Environmental Impact (CO ₂) Rating		
	Current	Potential
<i>Very environmentally friendly - lower CO₂ emissions</i>		
(92-100) A		
(81-91) B		
(69-80) C		69
(55-68) D		
(39-54) E	46	
(21-38) F		
(1-20) G		
<i>Not environmentally friendly - higher CO₂ emissions</i>		
England, Scotland & Wales		EU Directive 2002/91/EC
Energy Efficiency Rating		
	Current	Potential
<i>Very energy efficient - lower running costs</i>		
(92-100) A		
(81-91) B		
(69-80) C		69
(55-68) D		
(39-54) E	49	
(21-38) F		
(1-20) G		
<i>Not energy efficient - higher running costs</i>		
England, Scotland & Wales		EU Directive 2002/91/EC

ML Estates wish to advise prospective purchasers that we have not checked the services or appliances. These particulars have been prepared as a guide only, any floor-plan or map is for illustrative purposes only. ML Estates, for themselves and for the vendors or lessors of this property whose agents they are given notice that: the particulars have been produced in good faith; do not constitute any part of a contract; no person in the employment of ML Estates has any authority to make or give any representation of warranty in relation to this property.