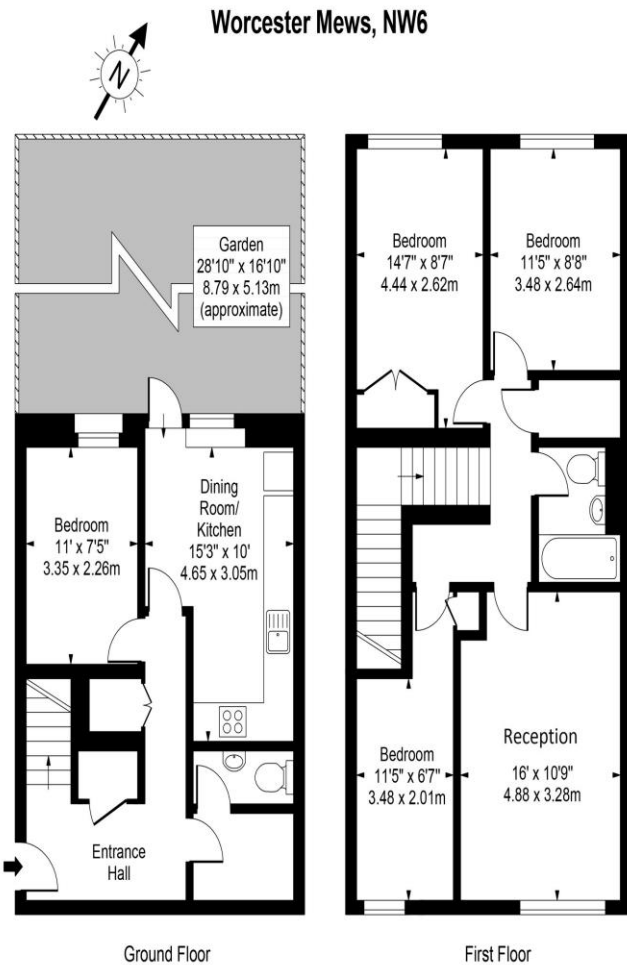


4 Bed Maisonette
Lymington Road
London NW6

- Private entrance
- Chain free
- Great storage space
- Guest cloakroom

Asking price of £700,000
Long Lease



Approx Gross Internal Area **1117 Sq Ft - 103.77 Sq M**

For Illustration Purposes Only - Not To Scale
www.tomekphotography.co.uk



Energy Efficiency Rating		
	Current	Potential
<i>Very energy efficient - lower running costs</i>		
(92-100) A		
(81-91) B		
(69-80) C		
(55-68) D	66	74
(39-54) E		
(21-38) F		
(1-20) G		
<i>Not energy efficient - higher running costs</i>		
England, Scotland & Wales		EU Directive 2002/91/EC

A **FOUR-BEDROOM** maisonette with private garden arranged over the ground and first floors of this modern three storey purpose built mews development. This spacious family home is located just off Lymington Road and is ideally located for easy access to West End Lane and West Hampstead's three train stations.

ML Estates wish to advise prospective purchasers that we have not checked the services or appliances. These particulars have been prepared as a guide only, any floor-plan or map is for illustrative purposes only. ML Estates, for themselves and for the vendors or lessors of this property whose agents they are given notice that: the particulars have been produced in good faith; do not constitute any part of a contract; no person in the employment of ML Estates has any authority to make or give any representation of warranty in relation to this property.