

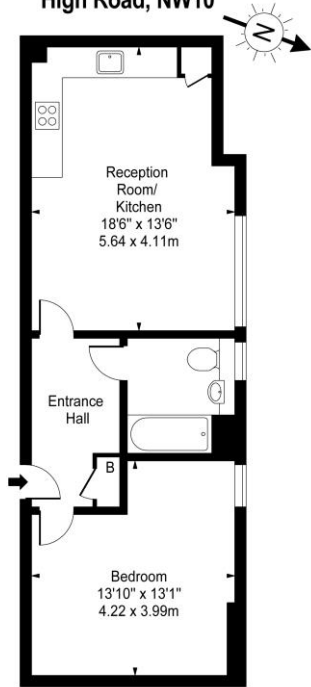


1 Bedroom Flat
High Road
London NW10

- Wood floors
- Master bedroom
- Recently built development
- Spacious reception room

Price: £403.85 pw / £1,750 pcm

**Metropolitan Court,
High Road, NW10**



Approx Gross Internal Area **528 Sq Ft - 49.05 Sq M**
For Illustration Purposes Only - Not To Scale
www.tomekphotography.co.uk



Environmental Impact (CO ₂) Rating		
	Current	Potential
Very environmentally friendly - lower CO ₂ emissions		
(92-100) A	93	93
(81-91) B		
(69-80) C		
(55-68) D		
(39-54) E		
(21-38) F		
(1-20) G		
Not environmentally friendly - higher CO ₂ emissions		
England, Scotland & Wales		EU Directive 2002/91/EC

Energy Efficiency Rating		
	Current	Potential
Very energy efficient - lower running costs		
(92-100) A		
(81-91) B		
(69-80) C	79	79
(55-68) D		
(39-54) E		
(21-38) F		
(1-20) G		
Not energy efficient - higher running costs		
England, Scotland & Wales		EU Directive 2002/91/EC

Very modern one double bedroom first floor apartment (528 sq ft.) located in the heart of Willesden Green. Comprising spacious open plan reception room with fully fitted kitchen with all appliances, luxury bathroom, master bedroom, part furnished. Lift and bike storage area. Within walking distance to Willesden Green Jubilee Line Station (Zone 2) and independent boutiques. Viewings are highly recommended. No parking permits. Water rates, heating and electricity bills are to be included with the rent.

ML Estates wish to advise prospective purchasers that we have not checked the services or appliances. These particulars have been prepared as a guide only, any floor-plan or map is for illustrative purposes only. ML Estates, for themselves and for the vendors or lessors of this property whose agents they are given notice that: the particulars have been produced in good faith; do not constitute any part of a contract; no person in the employment of ML Estates has any authority to make or give any representation of warranty in relation to this property.