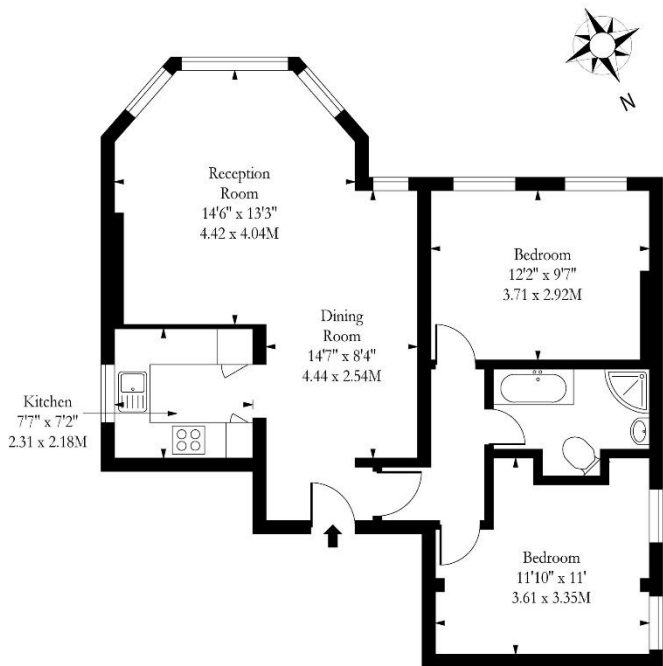


Teignmouth Road NW2



First Floor

Approx Gross Internal Area 686 Sq Ft - 63.73 Sq M

Measured in accordance with RICS guidelines. Every attempt is made to ensure accuracy. However all measurements are approximate. The floor plan is illustrative purposes only and is not to scale



Teignmouth Road, Mapesbury, London, NW2

Offers in excess of £500,000 Leasehold



Teignmouth Road, Mapesbury, London, NW2

Offers in excess
of £500,000 Leasehold

- Beautiful conservation area
- Large south facing reception
- Communal garden
- Moments from tube
- High ceilings

Located on the first floor of this recently REFURBISHED DETACHED DOUBLE FRONTED Victorian house is this spacious TWO-BEDROOM converted flat. This spacious home features a separate modern kitchen a large reception room with open plan dining area and access to the communal rear gardens. Teignmouth Road a is wide tree-lined residential in the heart of the MAPESBURY CONSERVATION area being within just moments walking distance of Kilburn Jubilee station.



ML Estates

367 West End Lane, West
Hampstead, London, NW6 1LP

020 7328 4444

info@m-l.co.uk



Energy Efficiency Rating		Current	Potential
Very energy efficient - lower running costs			
(92-100)	A		
(81-91)	B		
(69-80)	C		80
(55-68)	D	69	
(39-54)	E		
(21-38)	F		
(1-20)	G		
Not energy efficient - higher running costs			

England, Scotland & Wales

EU Directive
2002/91/EC