



SEYMOURGREEN
AT THE HEART ♥ OF YOUR MOVE

Chobham Gardens, Southfields, London, SW19

- ♥ Good Size Studio Room
- ♥ Part Furnished
- ♥ Double Glazed
- ♥ Good Order Throughout
- ♥ Separate Well Fitted Kitchen
- ♥ Modern Bathroom

A delightful 2nd floor studio flat for rent in this highly regarded location close to both Wimbledon Common and Southfields Tube Station.

To Let: £1,000 per month



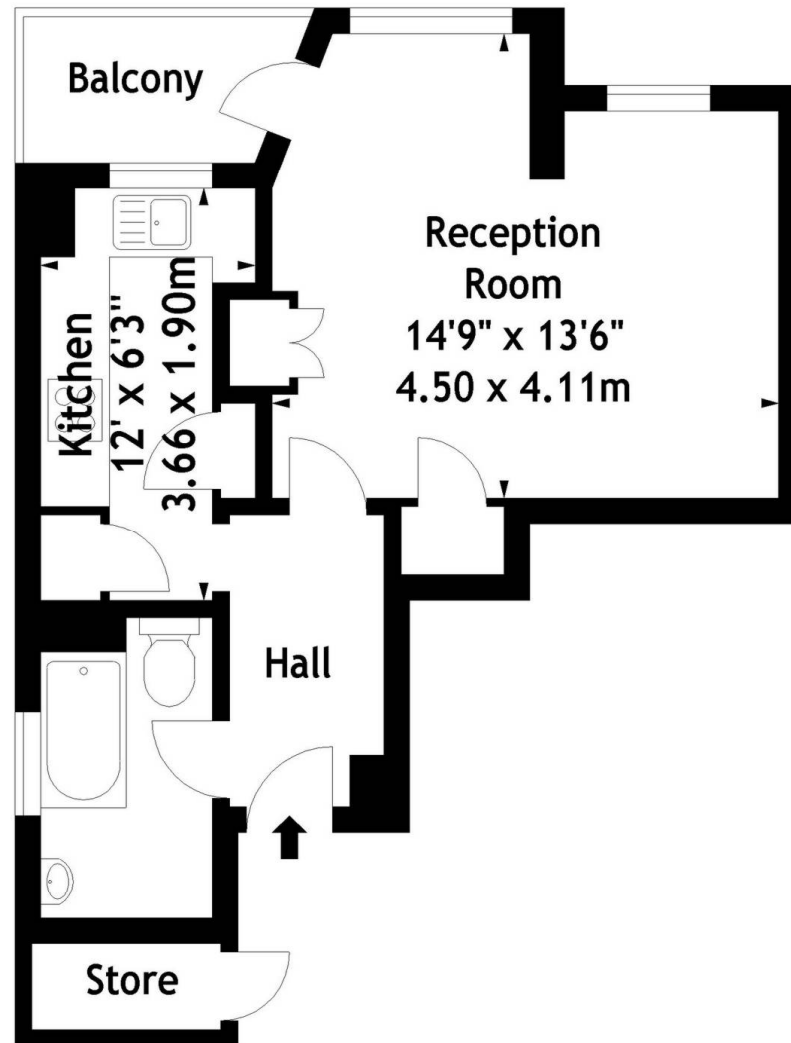
Seymour Green, 483 Merton Road, London SW18 5LE

T: 020 8870 0111 F: 020 3302 9598 E: southfields@seymour-green.co.uk W: seymour-green.co.uk



SEYMOURGREEN
AT THE HEART ♥ OF YOUR MOVE

Chobham Gardens, SW19
Approx. Gross Internal Area
354 Sq Ft - 32.89 Sq M



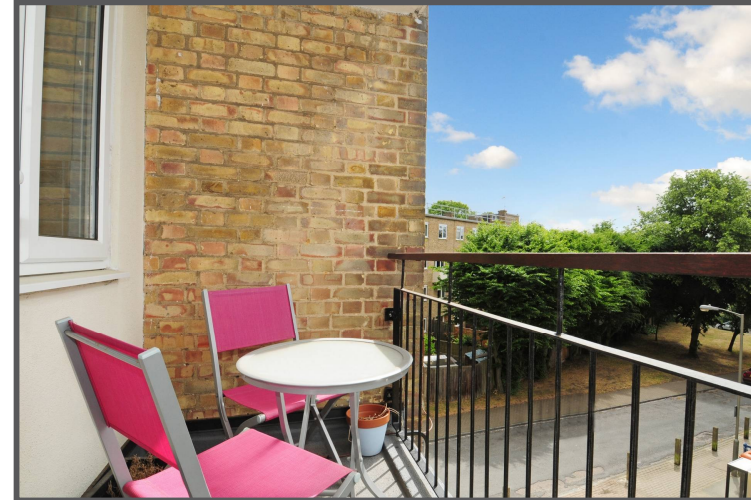
Second Floor

Measured in accordance with RICS guidelines. Every attempt is made to ensure accuracy, however all measurements are approximate. This floor plan is for illustrative purposes only and is not to scale.
© Luke Casserly Photography 2011



SEYMOURGREEN
AT THE HEART ♥ OF YOUR MOVE

Chobham Gardens, Southfields, London, SW19 To Let: £1,000 per month

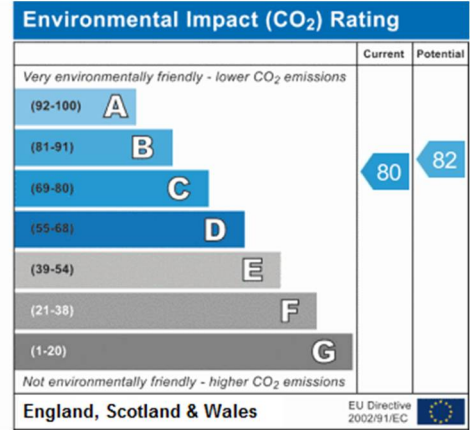
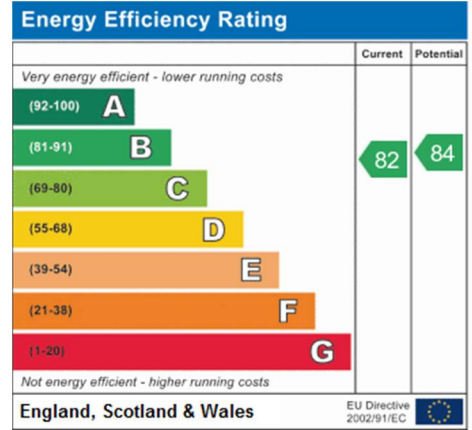


Seymour Green, 483 Merton Road, London SW18 5LE
T: 020 8870 0111 F: 020 3302 9598 E: southfields@seymour-green.co.uk W: seymour-green.co.uk



SEYMOURGREEN
AT THE HEART OF YOUR MOVE

Chobham Gardens, Southfields, London, SW19 To Let: £1,000 per month



IMPORTANT NOTICE
Descriptions of the property are subjective and are used in good faith as an opinion and NOT as a statement of fact. Please make further specific enquires to ensure that our descriptions are likely to match any expectations you may have of the property. We have not tested any services, systems or appliances at this property. We strongly recommend that all the information we provide be verified by you on inspection, and by your Surveyor and Conveyancer.

Seymour Green, 483 Merton Road, London SW18 5LE
T: 020 8870 0111 F: 020 3302 9598 E: southfields@seymour-green.co.uk W: seymour-green.co.uk