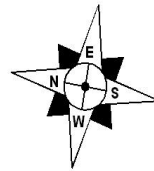
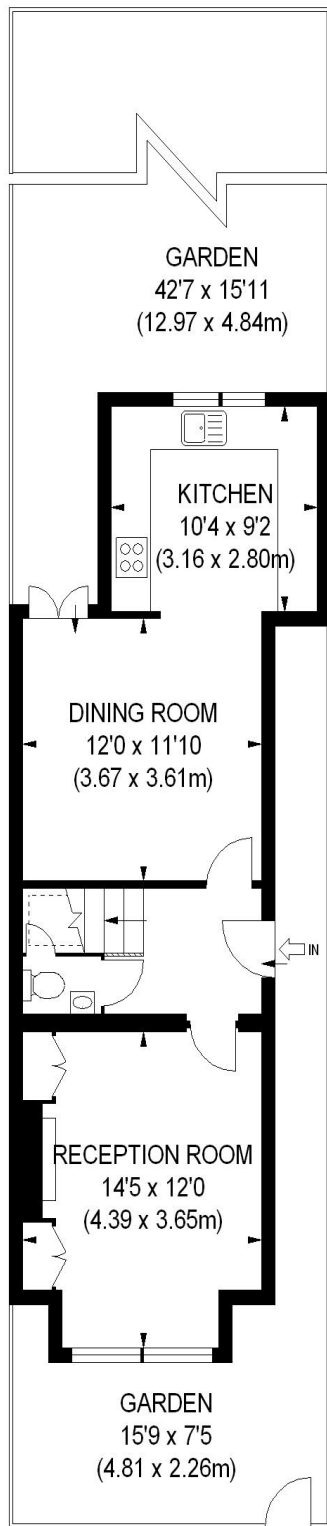




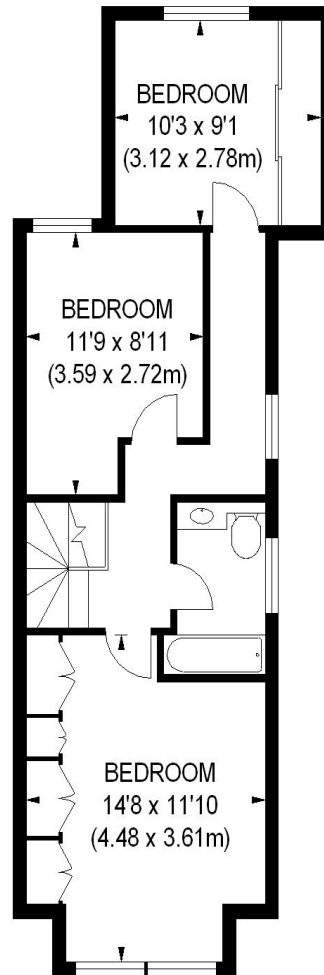
Clonmore Street, SW18

Seymour Green are delighted to offer for rent this well presented family home comprising living room, dining room opening to the well fitted kitchen, three double bedrooms and modern bathroom. The well balanced accommodation is complimented by a delightful lawned rear garden. Clonmore Street is highly desirable residential road within the popular Southfields Grid; as such it is well located for transport with Southfields Tube Station just a five minute walk. A good selection of shops can be found on Replingham Road and Southside Shopping Centre is also close by.

£2,300 per month



GROUND FLOOR



FIRST FLOOR

APPROX. GROSS INTERNAL FLOOR AREA 974 SQ FT / 90 SQ M

Illustration for identification purposes only, not to scale
All measurements are maximum, and includes wardrobes and window bays where applicable
Prepared by Pixangle © . Tel 020 8870 2118