



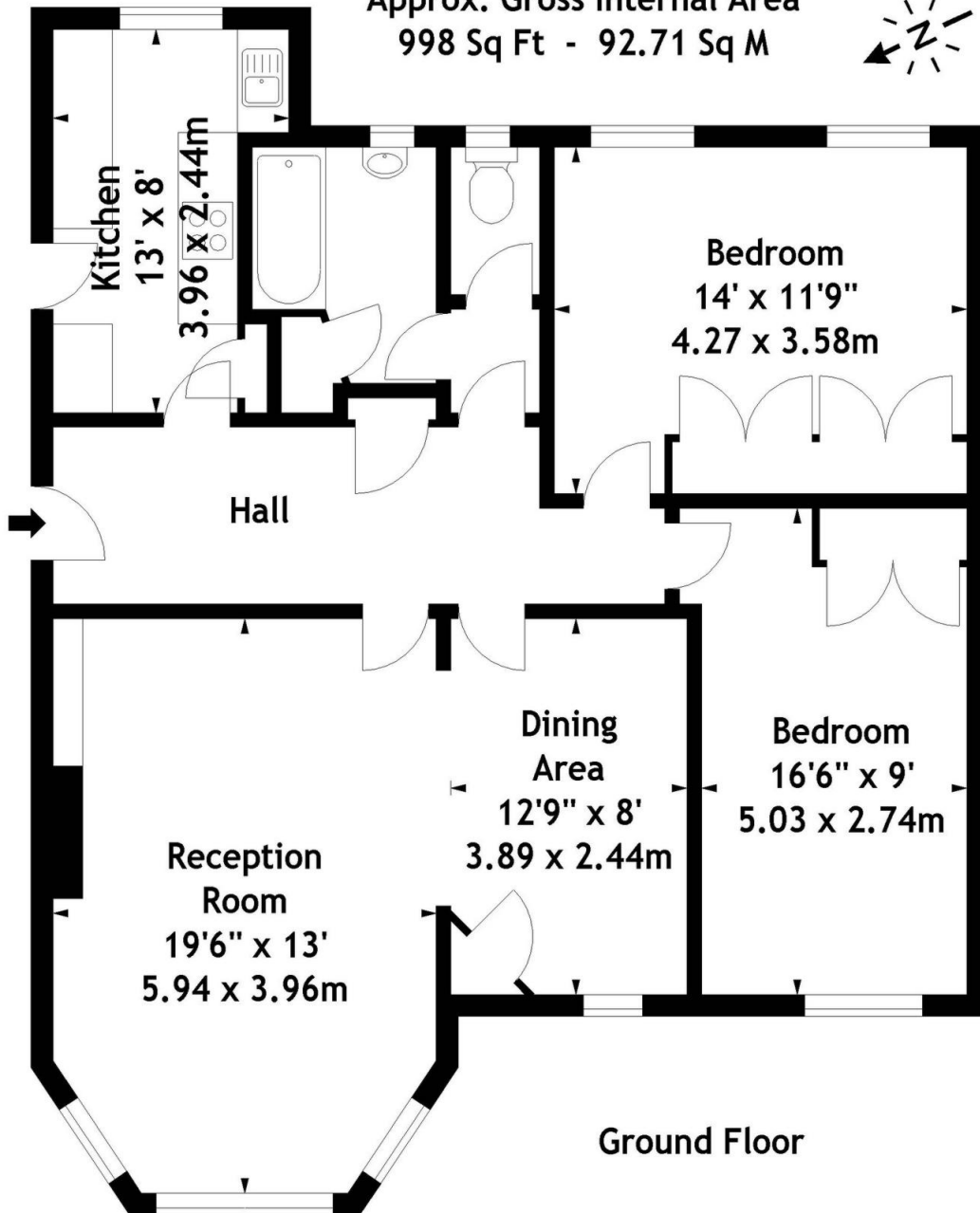
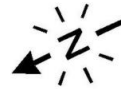
## Manor Fields, SW15

A wonderful raised ground floor apartment situated within the highly desirable and secure Manor Fields development. The property is presented in excellent order throughout with spacious living room and dining room, two double bedrooms, well fitted kitchen and modern bathroom. The property further benefits from glorious 'park like' communal gardens garage en block and off street parking. Manor Fields is well located for the numerous amenities of Putney Town Centre whilst also benefitting from easy access to the A3.

**£2,000 per month**

Seymour Green, 1 Keswick Broadway, Upper Richmond Road, London SW15 2RB  
T: 020 8874 7505 F: 020 3302 9598 E: [putney@seymour-green.co.uk](mailto:putney@seymour-green.co.uk) W: [seymour-green.co.uk](http://seymour-green.co.uk)  
Seymour Green is the trading name of Seymour Ventures Limited, registered in England: 6824930 at 9 Limes Road, BR3 6NS

Sommerville House, SW15  
Approx. Gross Internal Area  
998 Sq Ft - 92.71 Sq M



Measured in accordance with RICS guidelines. Every attempt is made to ensure accuracy, however all measurements are approximate. This floor plan is for illustrative purposes only and is not to scale.  
© Luke Casserly Photography 2010