



**SEYMOURGREEN**  
AT THE HEART ♥ OF YOUR MOVE

## Upper Richmond Road, Putney, London, SW15

- ♥ Spacious Two Bedroom Flat
- ♥ Accommodation Over Two Floors
- ♥ Ideally Located for East Putney Tube
- ♥ Stunning Communal Gardens
- ♥ Off Street Parking
- ♥ 1200 Sq Ft.

1200 SQUARE FEET of accommodation over TWO FLOORS perfectly located for the amenities of EAST PUTNEY with the Tube Station being about 5 minute walk. The flat has two LARGE double bedrooms, WONDERFUL living room and FABULOUS kitchen breakfast room, off street parking and a large garden shared with one other flat.

# To Let: £1,900 per month

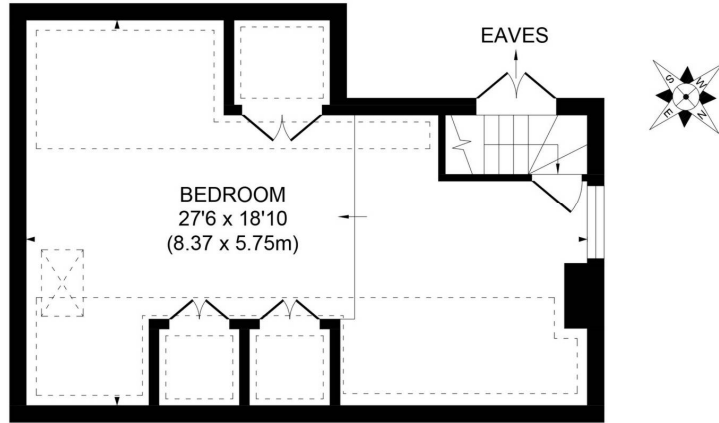


Seymour Green, 483 Merton Road, London SW18 5LE

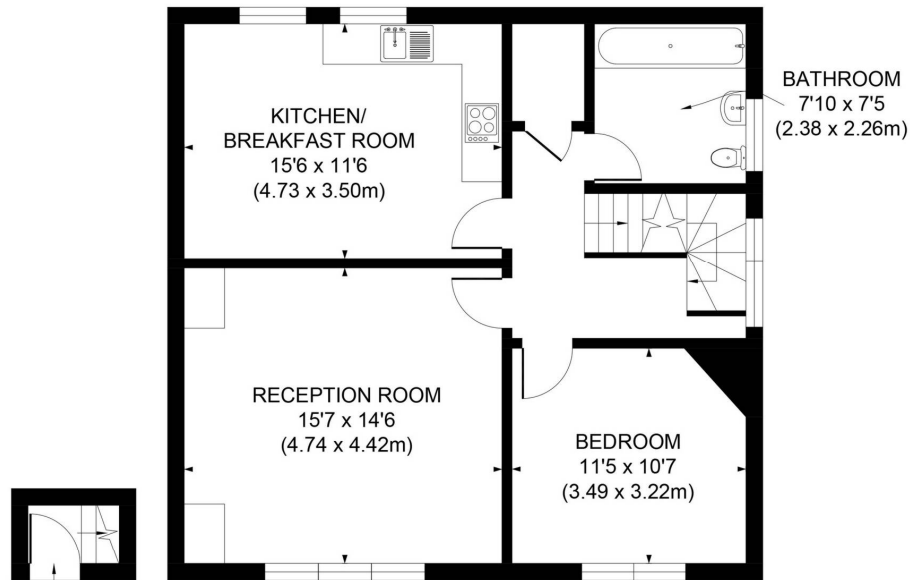
T: 020 8870 0111 F: 020 3302 9598 E: southfields@seymour-green.co.uk W: seymour-green.co.uk



**SEYMOURGREEN**  
AT THE HEART ♥ OF YOUR MOVE



**SECOND FLOOR**



**GROUND FLOOR**

**FIRST FLOOR**

**APPROX. GROSS INTERNAL FLOOR AREA 1200 SQ. FT / 111.53 SQ. M**

Illustration for identification purpose only, not to scale  
All measurements are maximum, and includes wardrobes and window bays where applicable  
Prepared by Pixangle ©. Tel 020 8870 2118





SEYMOURGREEN  
AT THE HEART ♥ OF YOUR MOVE

# Upper Richmond Road, Putney, London, SW15 To Let: £1,900 per month

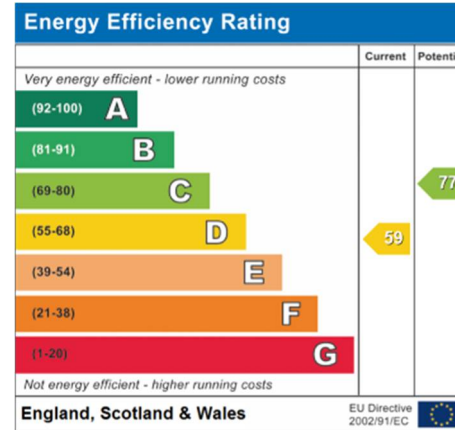


Seymour Green, 483 Merton Road, London SW18 5LE  
T: 020 8870 0111 F: 020 3302 9598 E: [southfields@seymour-green.co.uk](mailto:southfields@seymour-green.co.uk) W: [seymour-green.co.uk](http://seymour-green.co.uk)



SEYMOURGREEN  
AT THE HEART OF YOUR MOVE

# Upper Richmond Road, Putney, London, SW15 To Let: £1,900 per month



**IMPORTANT NOTICE**  
Descriptions of the property are subjective and are used in good faith as an opinion and NOT as a statement of fact. Please make further specific enquires to ensure that our descriptions are likely to match any expectations you may have of the property. We have not tested any services, systems or appliances at this property. We strongly recommend that all the information we provide be verified by you on inspection, and by your Surveyor and Conveyancer.

Seymour Green, 483 Merton Road, London SW18 5LE  
T: 020 8870 0111 F: 020 3302 9598 E: southfields@seymour-green.co.uk W: seymour-green.co.uk