



**SEYMOURGREEN**  
AT THE HEART ♥ OF YOUR MOVE

## Southdean Gardens, Southfields, London, SW19

- ♥ Superb Location
- ♥ Stunning Open Plan Living Room
- ♥ 2 Double Bedrooms
- ♥ Excellent Fitted Kitchen
- ♥ 30' Rear Garden
- ♥ Close to Southfields Tube

A FABULOUS ground floor flat with PRIVATE GARDEN located on one of the area's most sought after roads being just a few minutes walk to SOUTHFIELDS TUBE STATION, WIMBLEDON PARK and SOUTHFIELDS VILLAGE with its selection of shops and cafes. This SPACIOUS flat boasts a stunning OPEN PLAN living/dining/kitchen, along with TWO double bedrooms and two bathrooms.

# To Let: £2,500 per month

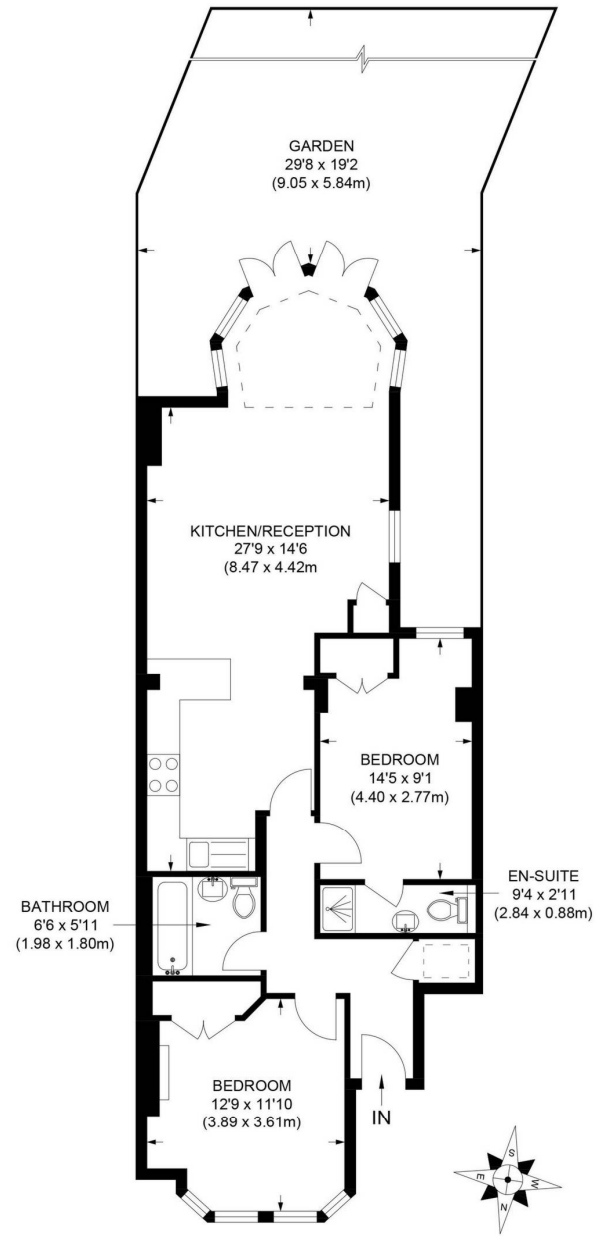


Seymour Green, 483 Merton Road, London SW18 5LE

T: 020 8870 0111 F: 020 3302 9598 E: [southfields@seymour-green.co.uk](mailto:southfields@seymour-green.co.uk) W: [seymour-green.co.uk](http://seymour-green.co.uk)



**SEYMOURGREEN**  
AT THE HEART ♥ OF YOUR MOVE



GROUND FLOOR

**APPROX. GROSS INTERNAL FLOOR AREA 836 SQ FT / 77.7 SQ M**

Illustration for identification purpose only, not to scale

All measurements are maximum, and includes wardrobes and window bays where applicable

Prepared by Pixangle ©. Tel 020 8870 2118





SEYMOURGREEN  
AT THE HEART ♥ OF YOUR MOVE

# Southdean Gardens, Southfields, London, SW19

## To Let: £2,500 per month



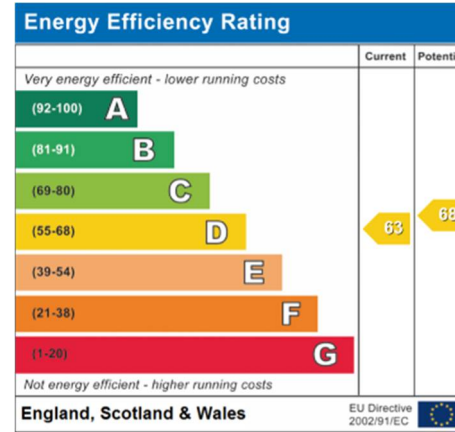
Seymour Green, 483 Merton Road, London SW18 5LE  
T: 020 8870 0111 F: 020 3302 9598 E: [southfields@seymour-green.co.uk](mailto:southfields@seymour-green.co.uk) W: [seymour-green.co.uk](http://seymour-green.co.uk)



SEYMOURGREEN  
AT THE HEART OF YOUR MOVE

# Southdean Gardens, Southfields, London, SW19

## To Let: £2,500 per month



**IMPORTANT NOTICE**  
Descriptions of the property are subjective and are used in good faith as an opinion and NOT as a statement of fact. Please make further specific enquires to ensure that our descriptions are likely to match any expectations you may have of the property. We have not tested any services, systems or appliances at this property. We strongly recommend that all the information we provide be verified by you on inspection, and by your Surveyor and Conveyancer.

Seymour Green, 483 Merton Road, London SW18 5LE  
T: 020 8870 0111 F: 020 3302 9598 E: southfields@seymour-green.co.uk W: seymour-green.co.uk