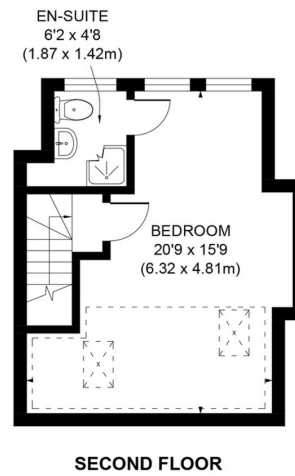
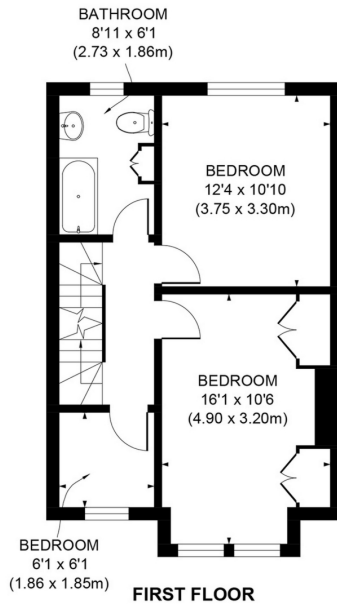
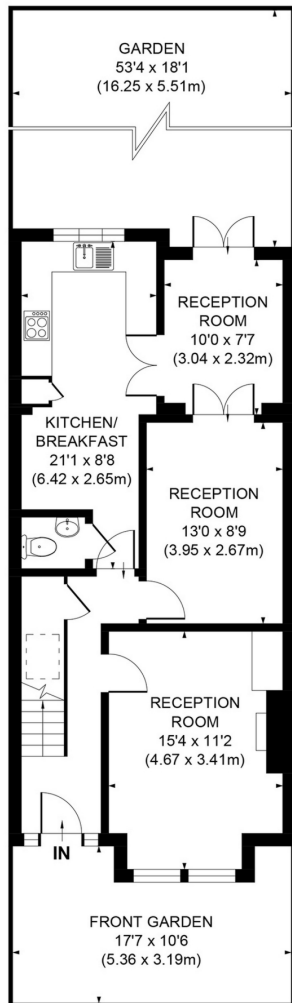




Elsenham Street, SW18

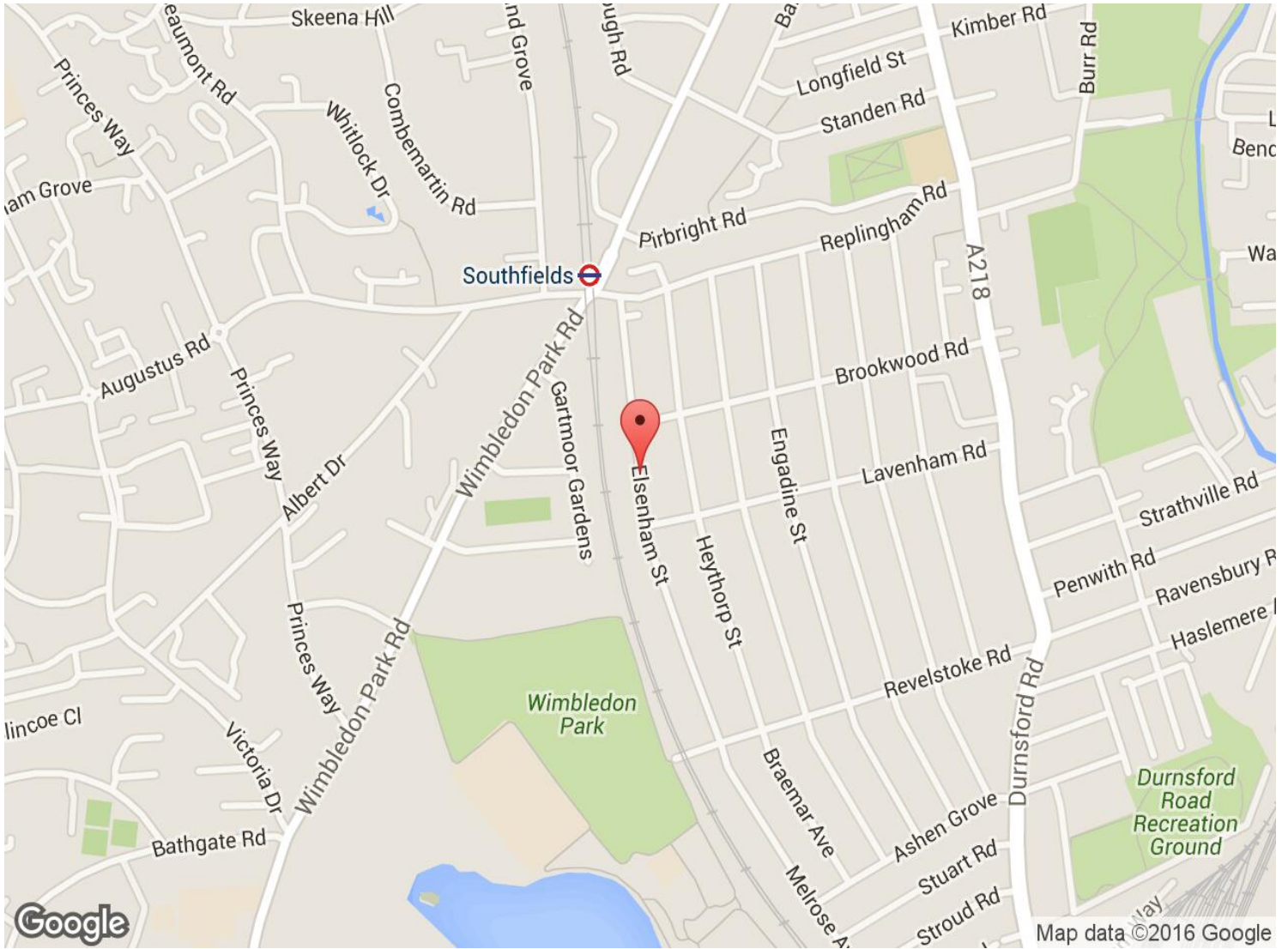
This superb family home boasts spacious accommodation over 3 floors comprising, 2 reception rooms, well fitted kitchen breakfast room with integrated appliances, conservatory dining room, 4 bedrooms, 2 bathrooms - one en suite- and guest cloakroom. The accommodation is complimented by a delightful rear garden of approximately 40 feet. Elsenham Street forms part of the popular Southfields Grid and as such is only a few minutes walk from the good selection of shops and eateries of Southfields Village whilst Southfields Tube Station is only a 3 minute walk.

£2,850 per month



APPROX. GROSS INTERNAL FLOOR AREA 1421 SQ FT / 132 SQ M

Illustration for identification purpose only, not to scale
 All measurements are maximum, and includes wardrobes and window bays where applicable
 Prepared by Pixangle ©. Tel 020 8870 2118



Energy Efficiency Rating		Current	Potential
Very energy efficient - lower running costs			
(92-100) A			
(81-91) B			
(69-80) C			
(55-68) D			73
(39-54) E	52		
(21-38) F			
(1-20) G			
Not energy efficient - higher running costs			
England & Wales		EU Directive 2002/91/EC	

Environmental Impact (CO ₂) Rating		Current	Potential
Very environmentally friendly - lower CO ₂ emissions			
(92-100) A			
(81-91) B			
(69-80) C			
(55-68) D			
(39-54) E			
(21-38) F			
(1-20) G			
Not environmentally friendly - higher CO ₂ emissions			
England & Wales		EU Directive 2002/91/EC	