



SEYMOURGREEN
AT THE HEART ♥ OF YOUR MOVE

Aslett Street, Earlsfield, London, SW18

- ♥ Two Double Bedrooms
- ♥ Eat in Kitchen
- ♥ Wandsworth Town Station
- ♥ Good Condition
- ♥ Accommodation Over Two Floors
- ♥ Two Bathrooms

A very SPACIOUS flat with well presented accommodation over two floors located on this residential street giving easy access to WANDSWORTH TOWN STATION and WANDSWORTH HIGH STREET. With two double bedrooms and two bathrooms this excellent flat would definitely suit professional sharers or a family.

To Let: £2,250 per month

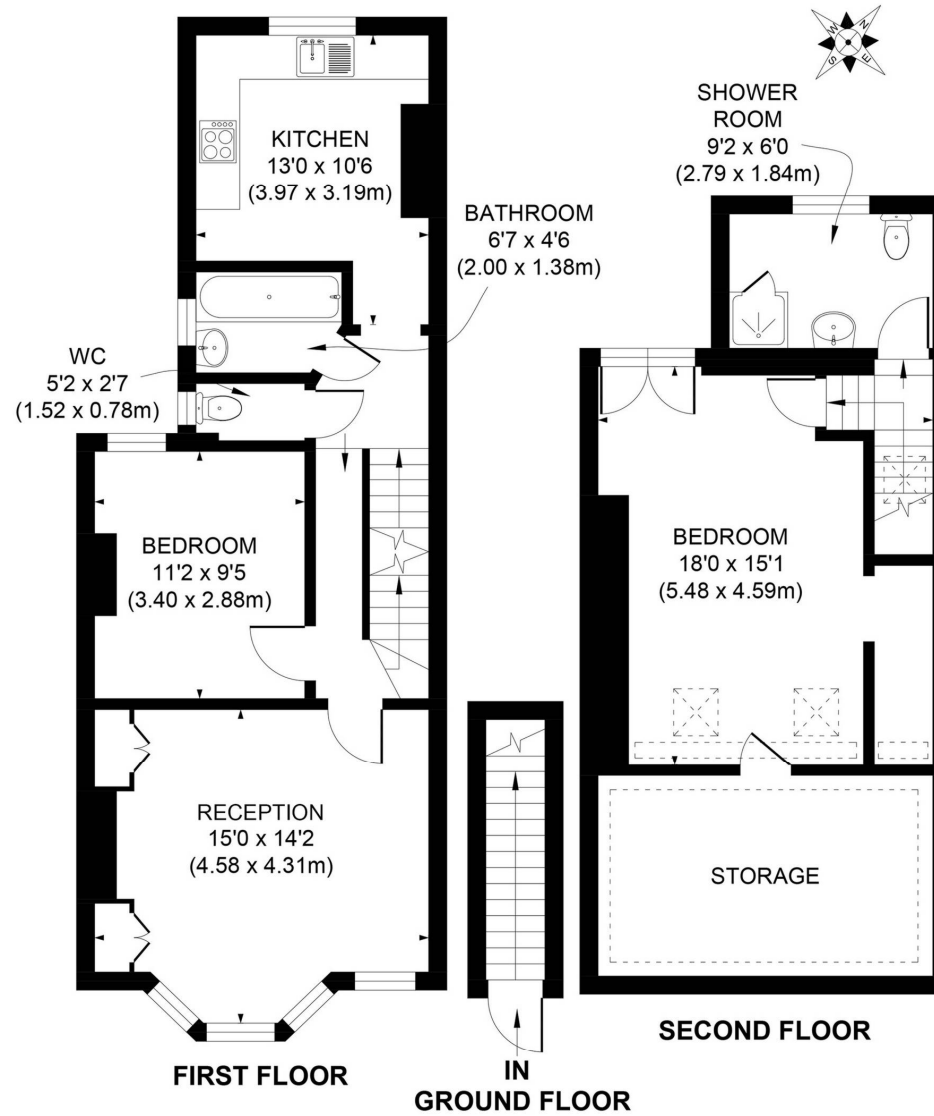


Seymour Green, 483 Merton Road, London SW18 5LE

T: 020 8870 0111 F: 020 3302 9598 E: southfields@seymour-green.co.uk W: seymour-green.co.uk



SEYMOURGREEN
AT THE HEART ♥ OF YOUR MOVE



APPROX. GROSS INTERNAL FLOOR AREA 1070 SQ. FT / 99.42 SQ. M

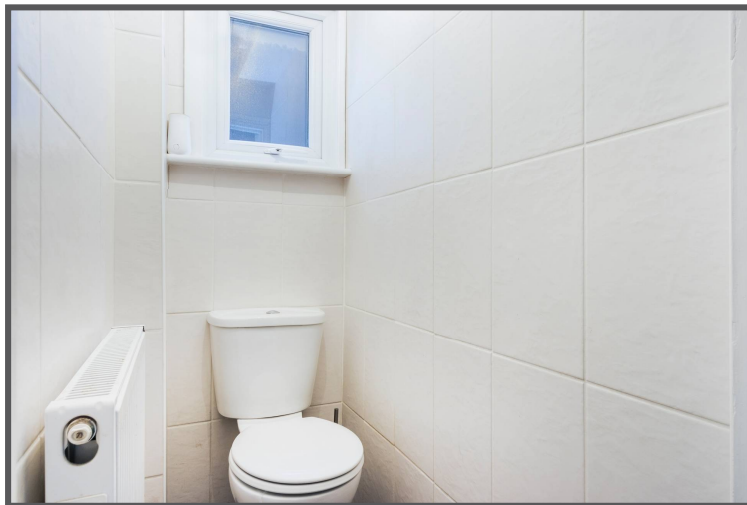
Illustration for identification purpose only, not to scale
All measurements are maximum, and includes wardrobes and window bays where applicable
Prepared by Pixangle ©. Tel 020 8870 2118



SEYMOURGREEN
AT THE HEART ♥ OF YOUR MOVE

Aslett Street, Earlsfield, London, SW18

To Let: £2,250 per month



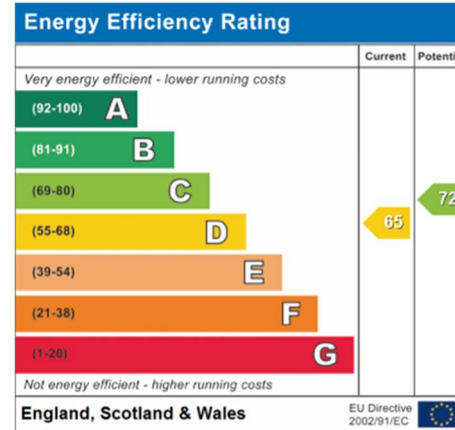
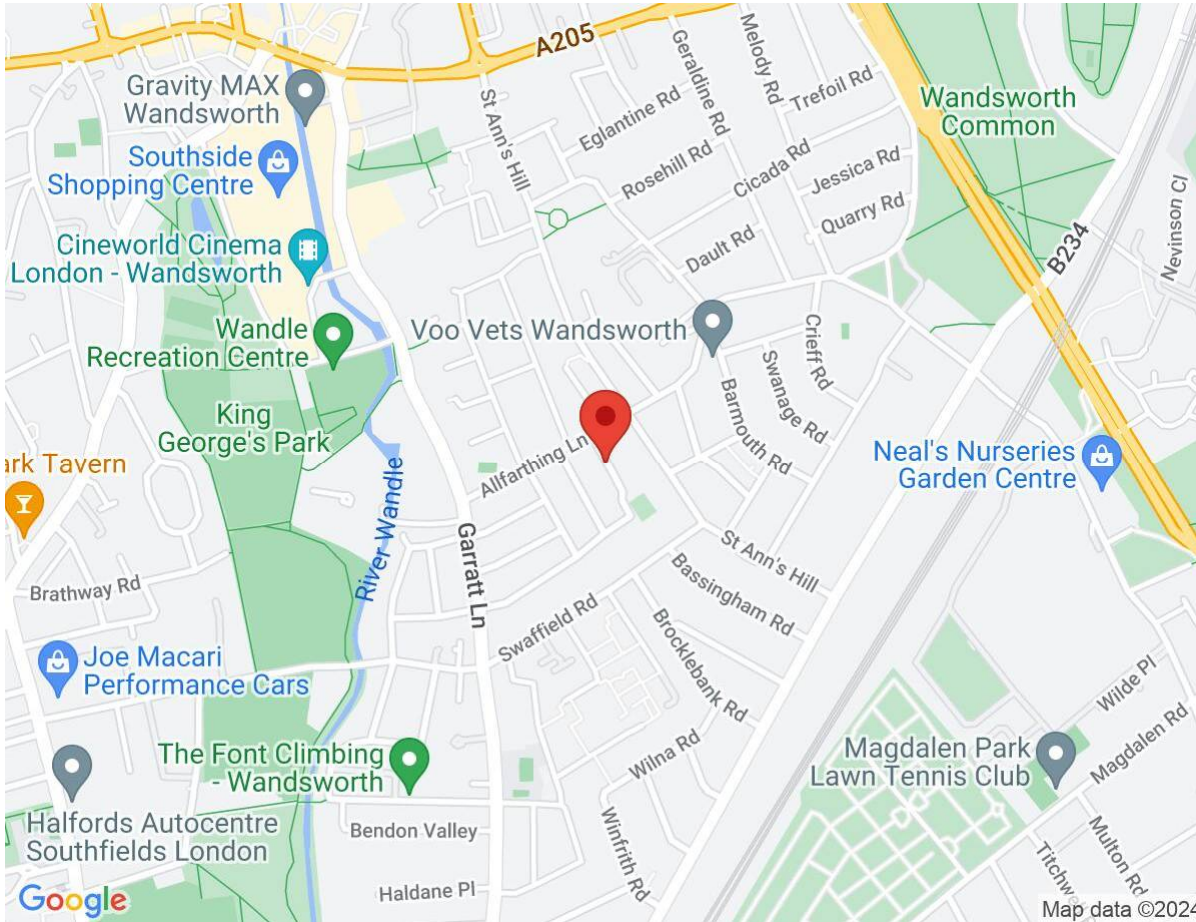
Seymour Green, 483 Merton Road, London SW18 5LE
T: 020 8870 0111 F: 020 3302 9598 E: southfields@seymour-green.co.uk W: seymour-green.co.uk



SEYMOURGREEN
AT THE HEART ♥ OF YOUR MOVE

Aslett Street, Earlsfield, London, SW18

To Let: £2,250 per month



IMPORTANT NOTICE
Descriptions of the property are subjective and are used in good faith as an opinion and NOT as a statement of fact. Please make further specific enquires to ensure that our descriptions are likely to match any expectations you may have of the property. We have not tested any services, systems or appliances at this property. We strongly recommend that all the information we provide be verified by you on inspection, and by your Surveyor and Conveyancer.

Seymour Green, 483 Merton Road, London SW18 5LE
T: 020 8870 0111 F: 020 3302 9598 E: southfields@seymour-green.co.uk W: seymour-green.co.uk