



**SEYMOURGREEN**  
AT THE HEART ♥ OF YOUR MOVE

## Wimbledon Park Road, Southfields, London, SW18

- ♥ Two Double Bedrooms
- ♥ Part Furnished
- ♥ Excellent Order Throughout
- ♥ Stunning Modern Bathroom
- ♥ Bright and Spacious
- ♥ 5 Minutes to Southfields Tube

A superb top floor conversion ideally located for Southfields Tube and within walking distance to East Putney. This top floor flat has well-proportioned accommodation, is in excellent order throughout and extremely well located. Comprising two double bedrooms, good size living room, fitted kitchen and stunning bathroom the property would be ideal for a professional couple or sharers. Wimbledon Park Road is ideally located for local amenities and transport with both Southfields and East Putney Tube Stations within easy walking distance.

# To Let: £1,850 per month

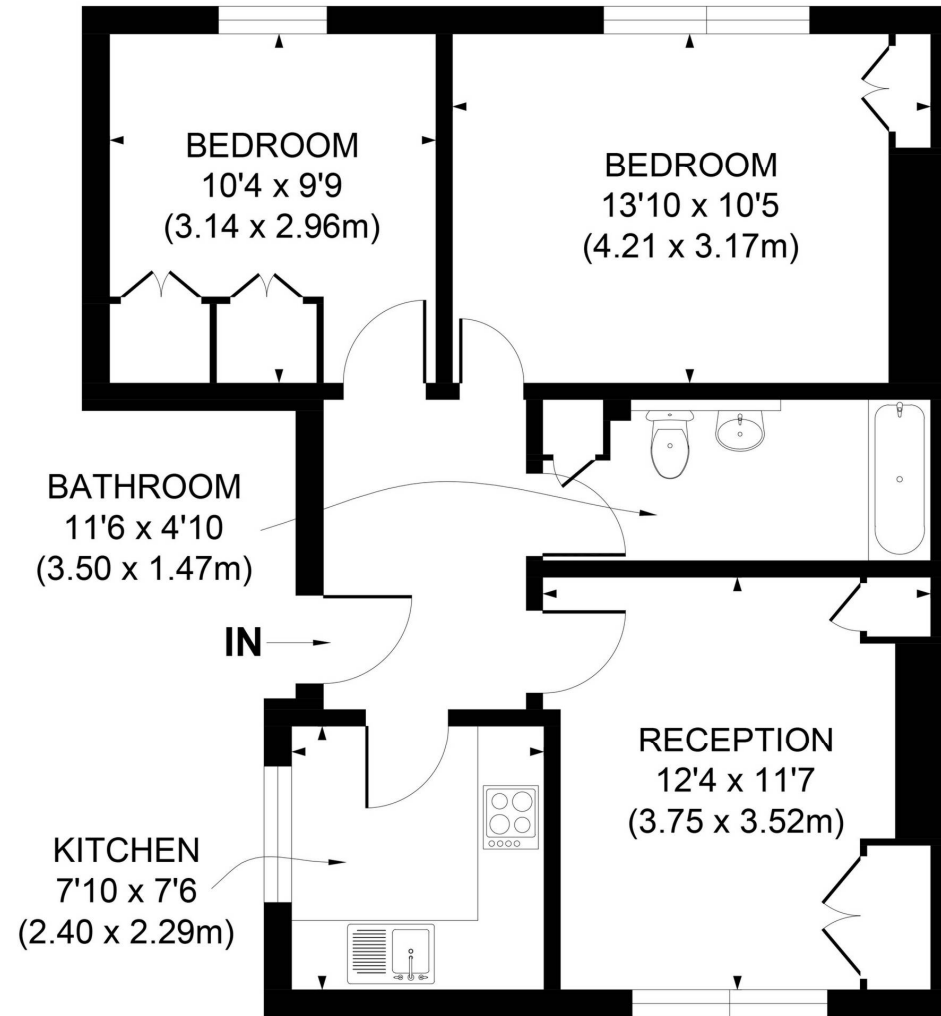


Seymour Green, 483 Merton Road, London SW18 5LE

T: 020 8870 0111 F: 020 3302 9598 E: [southfields@seymour-green.co.uk](mailto:southfields@seymour-green.co.uk) W: [seymour-green.co.uk](http://seymour-green.co.uk)



**SEYMOURGREEN**  
AT THE HEART ♥ OF YOUR MOVE



## TOP FLOOR

**APPROX. GROSS INTERNAL FLOOR AREA 589 SQ. FT / 54.72 SQ. M**

Illustration for identification purpose only, not to scale  
All measurements are maximum, and includes wardrobes and window bays where applicable  
Prepared by Pixangle ©. Tel 020 8870 2118



SEYMOURGREEN  
AT THE HEART ♥ OF YOUR MOVE

# Wimbledon Park Road, Southfields, London, SW18

## To Let: £1,850 per month



Seymour Green, 483 Merton Road, London SW18 5LE

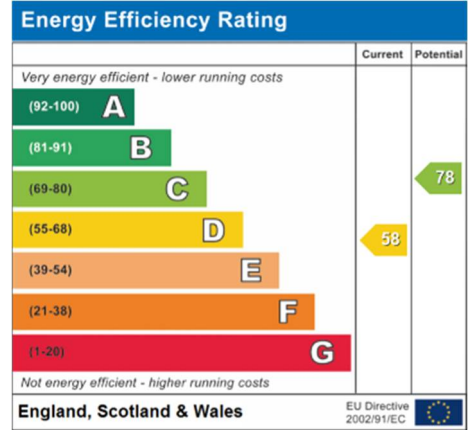
T: 020 8870 0111 F: 020 3302 9598 E: [southfields@seymour-green.co.uk](mailto:southfields@seymour-green.co.uk) W: [seymour-green.co.uk](http://seymour-green.co.uk)



SEYMOURGREEN  
AT THE HEART OF YOUR MOVE

# Wimbledon Park Road, Southfields, London, SW18

## To Let: £1,850 per month



**IMPORTANT NOTICE**  
Descriptions of the property are subjective and are used in good faith as an opinion and NOT as a statement of fact. Please make further specific enquires to ensure that our descriptions are likely to match any expectations you may have of the property. We have not tested any services, systems or appliances at this property. We strongly recommend that all the information we provide be verified by you on inspection, and by your Surveyor and Conveyancer.

Seymour Green, 483 Merton Road, London SW18 5LE  
T: 020 8870 0111 F: 020 3302 9598 E: southfields@seymour-green.co.uk W: seymour-green.co.uk