



**SEYMOURGREEN**  
AT THE HEART ♥ OF YOUR MOVE

## Putney Hill, Putney, London, SW15

- ♥ Two Double Bedrooms
- ♥ Great Living Space
- ♥ Large Eat in Kitchen
- ♥ Stunning Location
- ♥ Excellent Condition
- ♥ Useful Garage

A LARGE GROUND FLOOR well-presented flat set within this sought after GATED development on PUTNEY HILL being just opposite the wonderful wide open spaces of PUTNEY HEATH, with good easily accessible transport links to both Putney and Wimbledon. Comprising TWO DOUBLE BEDROOMS, generous living room, LARGE KITCHEN DINER and modern bathroom along with the added bonus of a very useful GARAGE, OFF STREET PARKING and communal gardens the flat is ideal for two sharers or a family.

# To Let: £2,250 per month

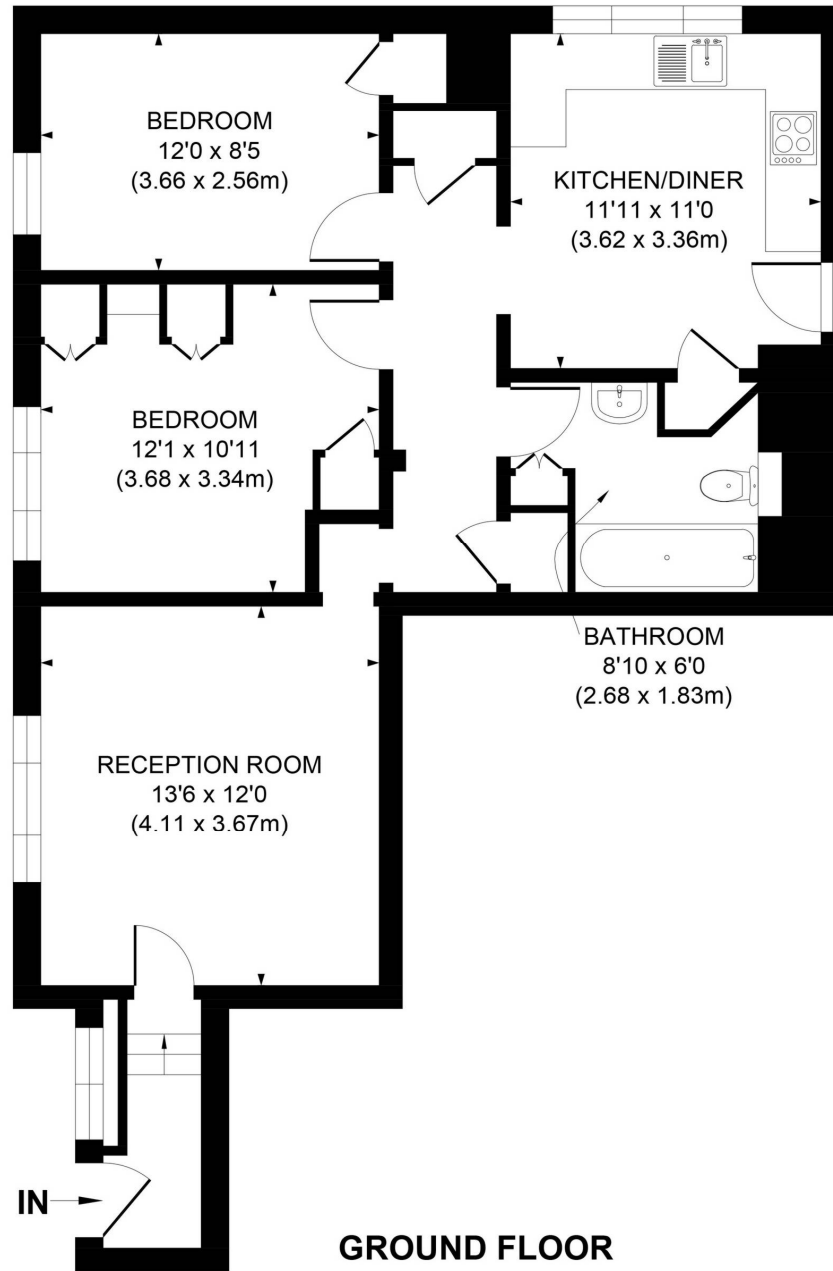


Seymour Green, 483 Merton Road, London SW18 5LE

T: 020 8870 0111 F: 020 3302 9598 E: [southfields@seymour-green.co.uk](mailto:southfields@seymour-green.co.uk) W: [seymour-green.co.uk](http://seymour-green.co.uk)



**SEYMOURGREEN**  
AT THE HEART ♥ OF YOUR MOVE



**APPROX. GROSS INTERNAL FLOOR AREA 750 SQ. FT / 69.67 SQ. M**

Illustration for identification purpose only, not to scale  
All measurements are maximum, and includes wardrobes and window bays where applicable  
Prepared by Pixangle ©. Tel 020 8870 2118



**SEYMOURGREEN**  
AT THE HEART ♥ OF YOUR MOVE

# Putney Hill, Putney, London, SW15 To Let: £2,250 per month



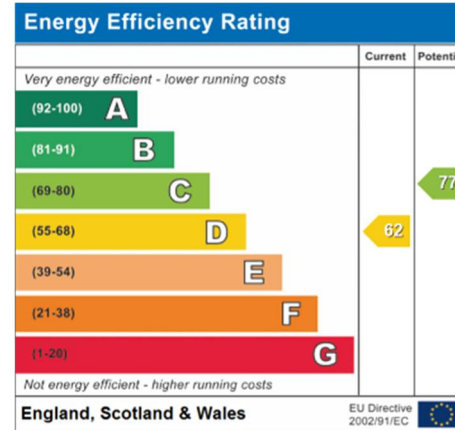
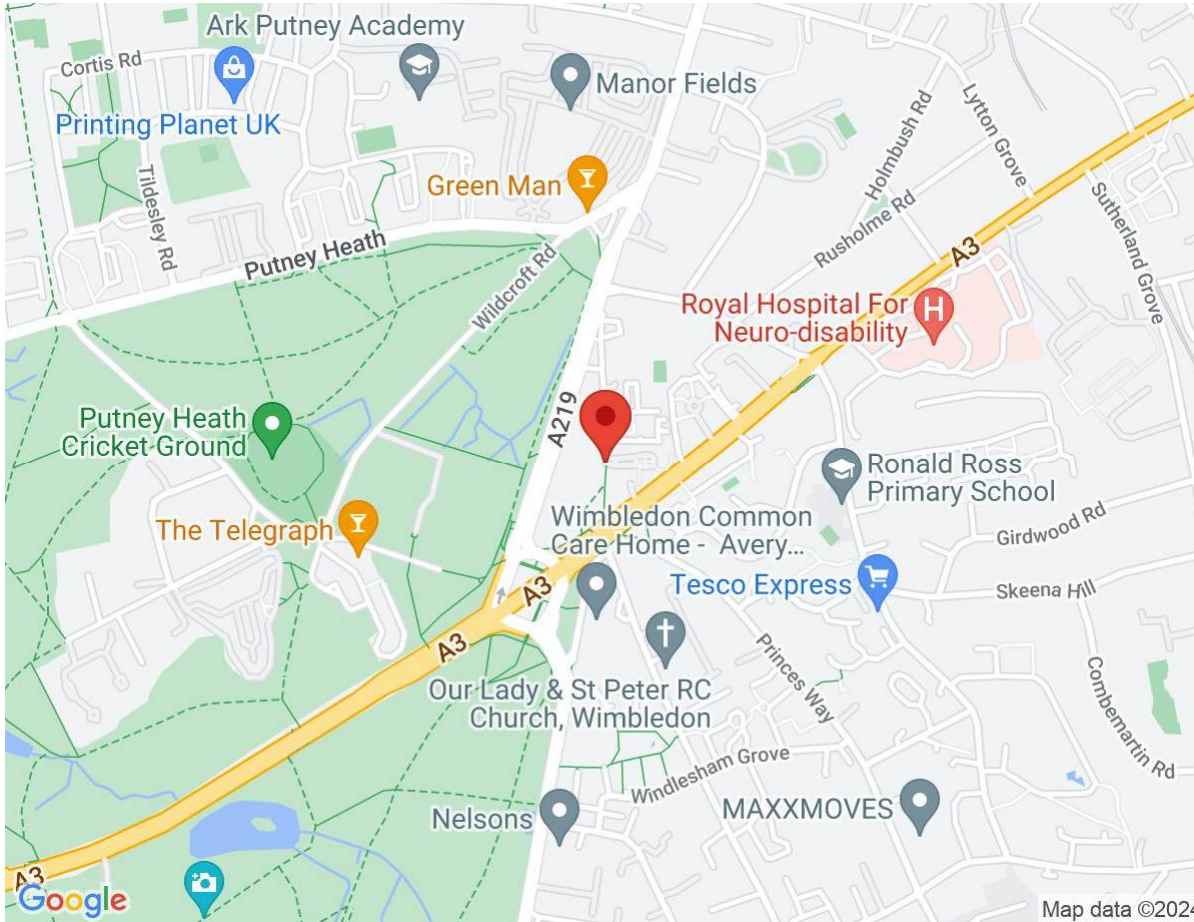
Seymour Green, 483 Merton Road, London SW18 5LE  
T: 020 8870 0111 F: 020 3302 9598 E: [southfields@seymour-green.co.uk](mailto:southfields@seymour-green.co.uk) W: [seymour-green.co.uk](http://seymour-green.co.uk)





SEYMOURGREEN  
AT THE HEART OF YOUR MOVE

# Putney Hill, Putney, London, SW15 To Let: £2,250 per month



**IMPORTANT NOTICE**  
Descriptions of the property are subjective and are used in good faith as an opinion and NOT as a statement of fact. Please make further specific enquires to ensure that our descriptions are likely to match any expectations you may have of the property. We have not tested any services, systems or appliances at this property. We strongly recommend that all the information we provide be verified by you on inspection, and by your Surveyor and Conveyancer.

Seymour Green, 483 Merton Road, London SW18 5LE  
T: 020 8870 0111 F: 020 3302 9598 E: southfields@seymour-green.co.uk W: seymour-green.co.uk