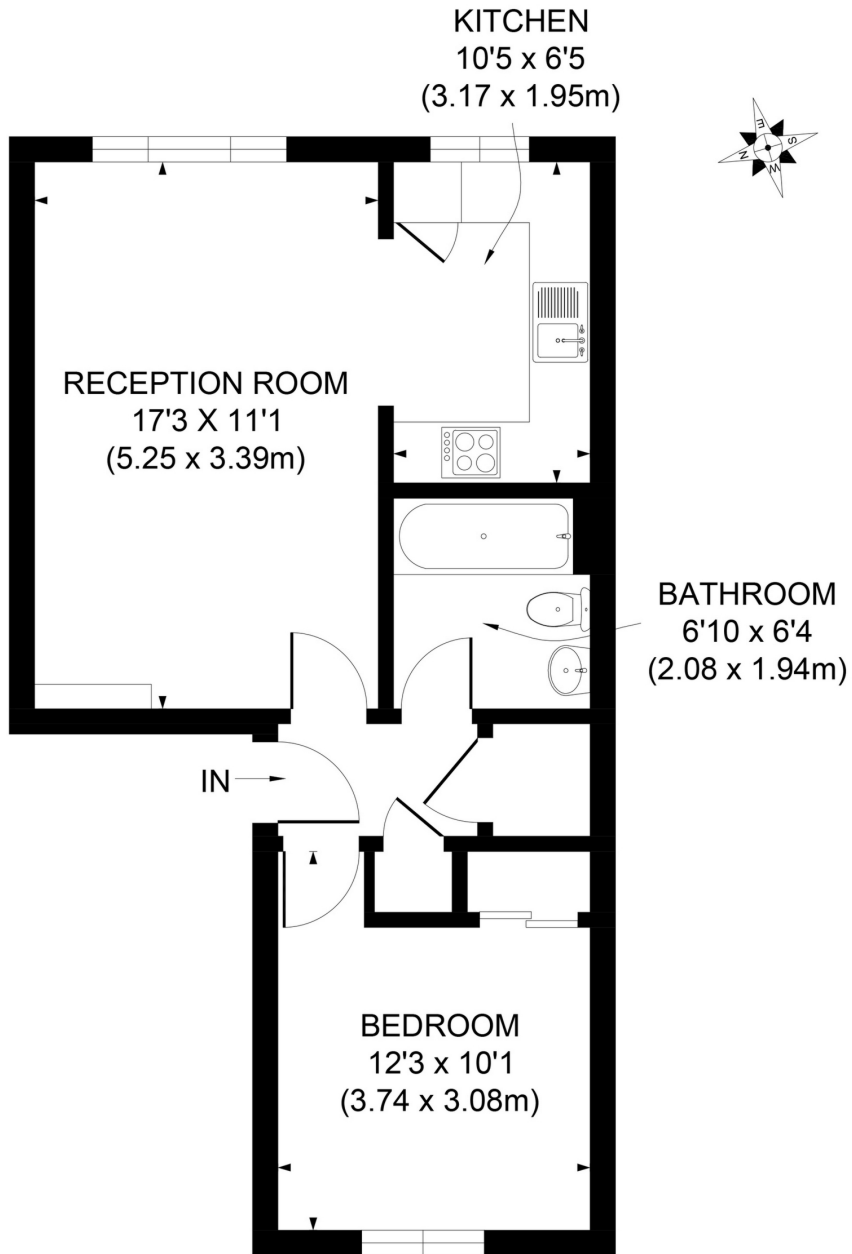


Alexandra Road, SW19

This first floor flat is ideally located for transport, shops and local amenities with both Wimbledon Town Centre and Wimbledon Park within easy walking distance. The recently decorated accommodation comprises a large living room, well fitted modern kitchen, double bedroom and bathroom with white suite. The property also benefits from wood flooring, has a useful garage en block and is furnished.

£1,275 per month

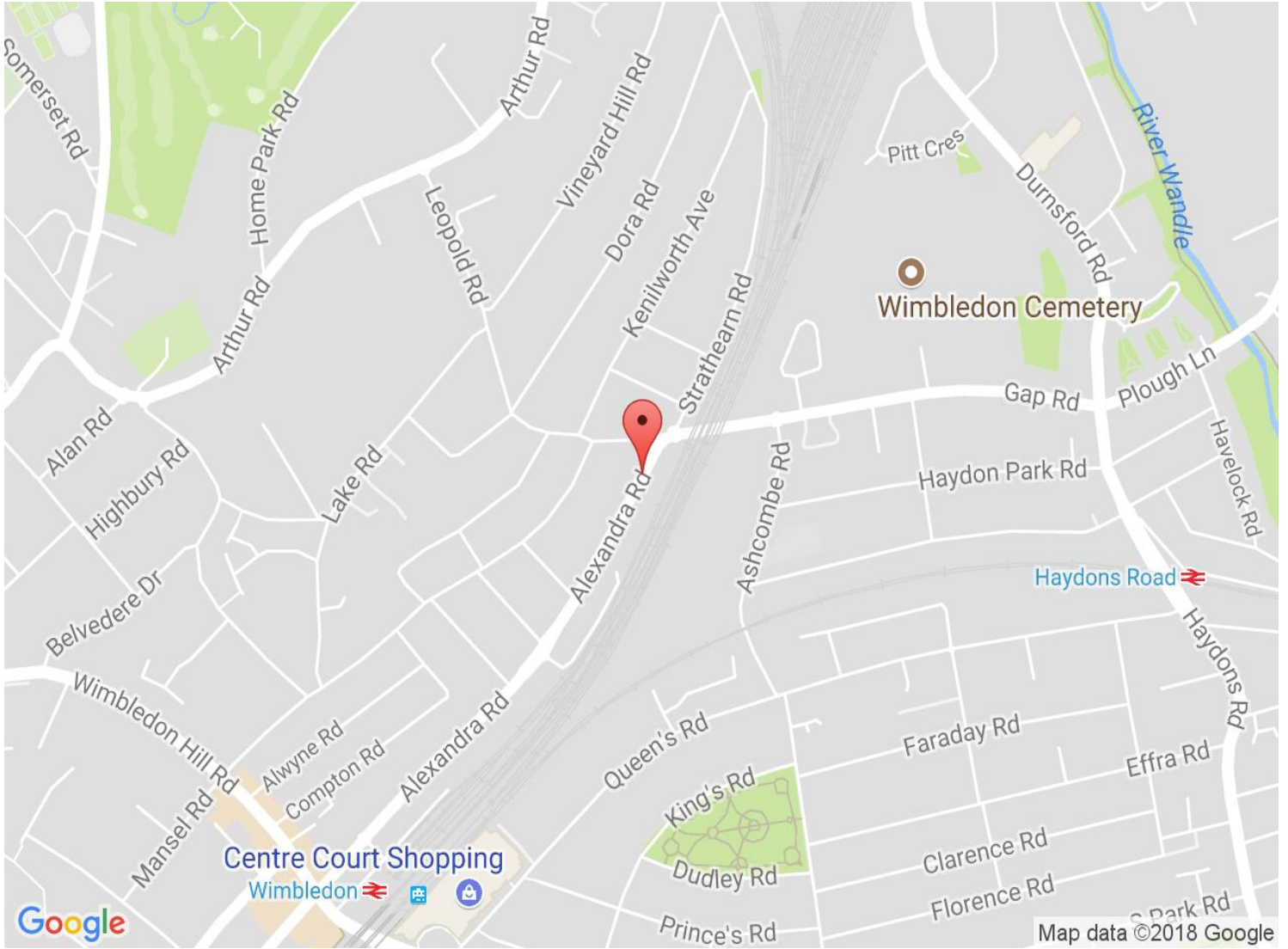
Seymour Green, 483 Merton Road, London SW18 5LE
T: 020 8870 0111 F: 020 3302 9598 E: southfields@seymour-green.co.uk W: seymour-green.co.uk
Seymour Green is the trading name of Seymour Ventures Limited, registered in England: 6824930 at 9 Limes Road, BR3 6NS



FIRST FLOOR

APPROX. GROSS INTERNAL FLOOR AREA 489 SQ. FT / 45.45 SQ. M

Illustration for identification purpose only, not to scale
 All measurements are maximum, and includes wardrobes and window bays where applicable
 Prepared by Pixangle ©. Tel 020 8870 2118



Energy Efficiency Rating		Environmental Impact (CO ₂) Rating	
	Current	Potential	
Very energy efficient - lower running costs			Very environmentally friendly - lower CO ₂ emissions
(92-100) A			(92-100) A
(81-91) B			(81-91) B
(69-80) C			(69-80) C
(55-68) D			(55-68) D
(39-54) E			(39-54) E
(21-38) F			(21-38) F
(1-20) G			(1-20) G
Not energy efficient - higher running costs			Not environmentally friendly - higher CO ₂ emissions
	70	75	74
			81
England & Wales	EU Directive 2002/91/EC		England & Wales
			EU Directive 2002/91/EC