



SEYMOURGREEN
AT THE HEART ♥ OF YOUR MOVE

Fawe Park Road, Putney, London, SW15

- ♥ Two Double Bedrooms
- ♥ Bright and Airy
- ♥ Accommodation Over Two Floors
- ♥ Open Plan Living Room and Kitchen
- ♥ Private South Facing Garden
- ♥ Furnished

A STYLISH flat over two floors with TWO DOUBLE BEDROOMS and TWO BATHROOMS perfectly located with EAST PUTNEY TUBE STATION just a five minute walk, whilst WANDSWORTH PARK and THE RIVER are just across the road. The flat has an open plan living room and kitchen with direct access to a private south facing rear garden and would suit professional sharers or a family.

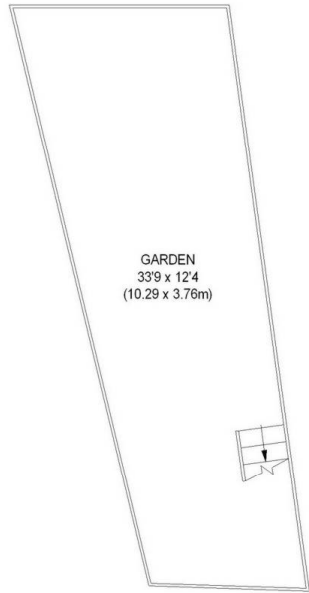
To Let: £2,000 per month



Seymour Green, 483 Merton Road, London SW18 5LE
T: 020 8870 0111 F: 020 3302 9598 E: southfields@seymour-green.co.uk W: seymour-green.co.uk

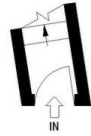


SEYMOURGREEN
AT THE HEART ♥ OF YOUR MOVE

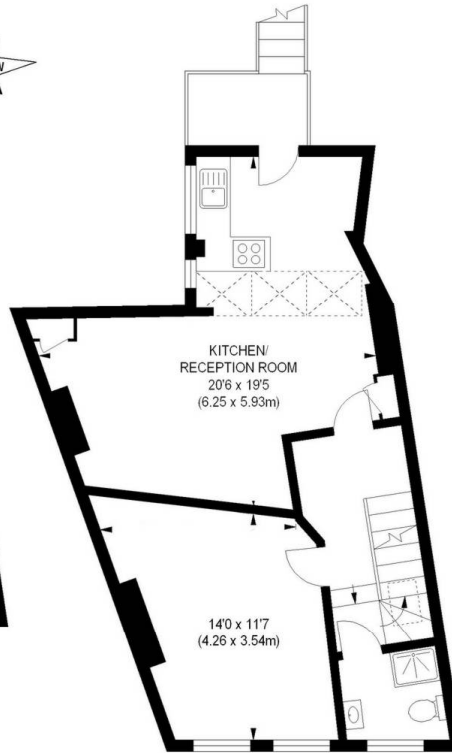


GARDEN
33'9 x 12'4
(10.29 x 3.76m)

GROUND FLOOR



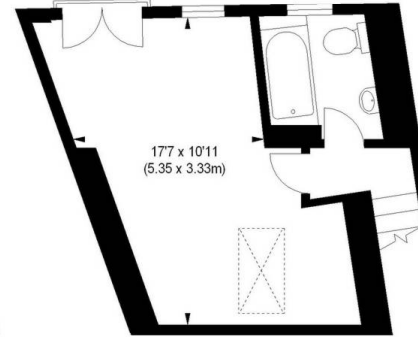
GROUND FLOOR
ENTRANCE



KITCHEN/
RECEPTION ROOM
20'6 x 19'5
(6.25 x 5.93m)

14'0 x 11'7
(4.26 x 3.54m)

FIRST FLOOR



17'7 x 10'11
(5.35 x 3.33m)

SECOND FLOOR

APPROX. GROSS INTERNAL FLOOR AREA 829 SQ FT / 77.01 SQ M

Illustration for identification purposes only, not to scale
All measurements are maximum, and includes wardrobes and window bays where applicable
Prepared by Pixangle © . Tel 020 8870 2118



SEYMOURGREEN
AT THE HEART ♥ OF YOUR MOVE

Fawe Park Road, Putney, London, SW15

To Let: £2,000 per month



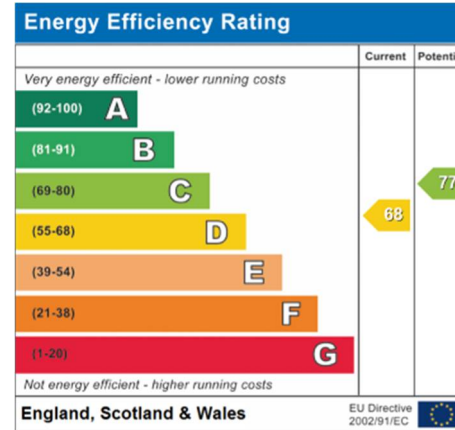
Seymour Green, 483 Merton Road, London SW18 5LE
T: 020 8870 0111 F: 020 3302 9598 E: southfields@seymour-green.co.uk W: seymour-green.co.uk



SEYMOURGREEN
AT THE HEART OF YOUR MOVE

Fawe Park Road, Putney, London, SW15

To Let: £2,000 per month



IMPORTANT NOTICE
Descriptions of the property are subjective and are used in good faith as an opinion and NOT as a statement of fact. Please make further specific enquires to ensure that our descriptions are likely to match any expectations you may have of the property. We have not tested any services, systems or appliances at this property. We strongly recommend that all the information we provide be verified by you on inspection, and by your Surveyor and Conveyancer.

Seymour Green, 483 Merton Road, London SW18 5LE
T: 020 8870 0111 F: 020 3302 9598 E: southfields@seymour-green.co.uk W: seymour-green.co.uk